

FOR LEASE

106 W. Allegan Street, Lansing



The Historic Hollister Building, Office/Retail Space Available

AVAILABLE SPACE:

- Suite 108: 1,485 SF
- Suite 116 (1st Flr. 4,329 SF) & Suite 210 (2nd Flr. 6,910 SF): 11,239 SF
- Suite 600: 4,000-10,068 SF

PROPERTY OVERVIEW:

- Five-year minimum lease term. renewal options available
- Historic six-story brick building located just one block from the Capitol
- Excellent visibility with high foot traffic
- Parking opportunities along Allegan Street & Washington Square
- Potential signage rights
- Located in the heart of busy downtown shopping district
- Over 96,000 employees within a three-mile radius

LEASE RATE:

\$20.00

PSF/YR, PLUS UTILITIES & JANITORIAL

FOR MORE INFORMATION:

Eric F. Rosekrans, CCIM, CPM

Executive Vice President

Direct: 517 319-9209

eric.rosekrans@martincommercial.com

Thomas Jamieson, SIOR

Senior Vice President, Office Advisor

Direct: 517 319-9235

thomas.jamieson@martincommercial.com

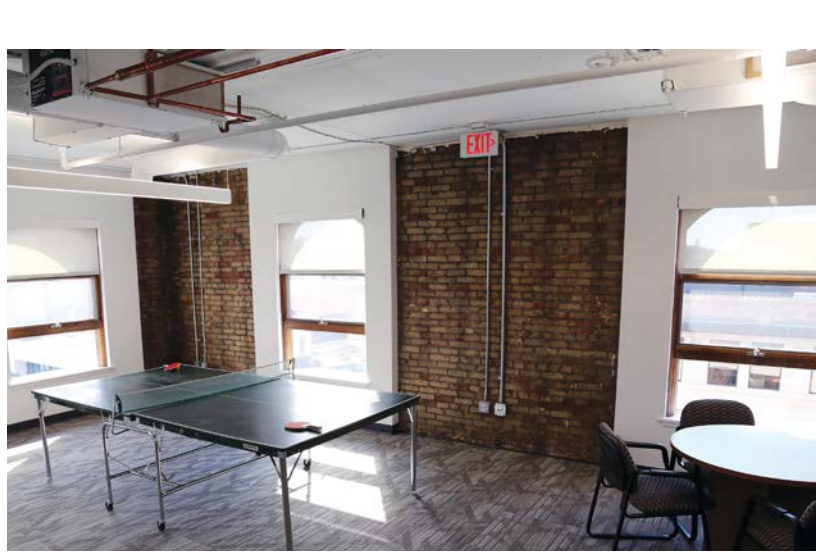
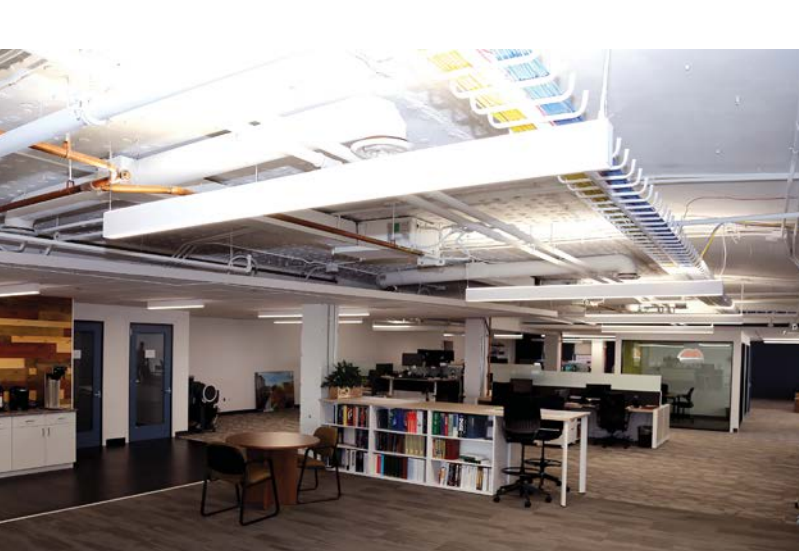
© 2024 MARTIN COMMERCIAL PROPERTIES, INC. ALL RIGHTS RESERVED. THIS INFORMATION HAS BEEN OBTAINED FROM SOURCES BELIEVED RELIABLE BUT HAS NOT BEEN VERIFIED FOR ACCURACY OR COMPLETENESS. YOU SHOULD CONDUCT A CAREFUL, INDEPENDENT INVESTIGATION OF THE PROPERTY AND VERIFY ALL INFORMATION. ANY RELIANCE ON THIS INFORMATION IS SOLELY AT YOUR OWN RISK. MARTIN COMMERCIAL PROPERTIES AND THE MARTIN LOGO ARE SERVICE MARKS OF MARTIN COMMERCIAL PROPERTIES, INC. ALL OTHER MARKS DISPLAYED ON THIS DOCUMENT ARE THE PROPERTY OF THEIR RESPECTIVE OWNERS. PHOTOS HEREIN ARE THE PROPERTY OF THEIR RESPECTIVE OWNERS. USE OF THESE IMAGES WITHOUT THE EXPRESS WRITTEN CONSENT OF THE OWNER IS PROHIBITED.

1111 Michigan Ave., Ste 300

East Lansing, MI 48823

517 351-2200

martincommercial.com



DEMOGRAPHICS			
Proximity	1-Mile	3-Mile	5-Mile
Population	12,115	91,396	202,875
Average Household Income	\$40,840	\$53,331	\$54,239





AREA INFORMATION:

0.1 Mile

State Capitol

1 Mile

I-496 Entrance

4 Miles

Michigan State University

Near

Restaurants, shopping, lodging
and entertainment

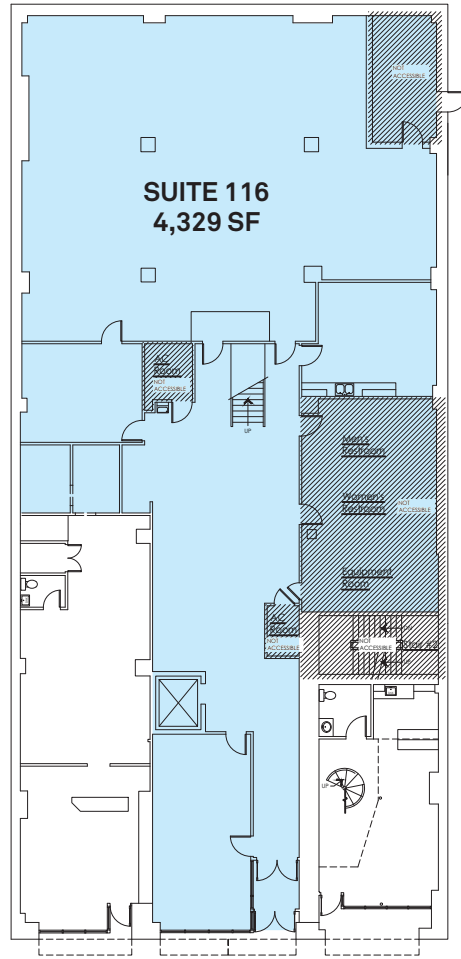
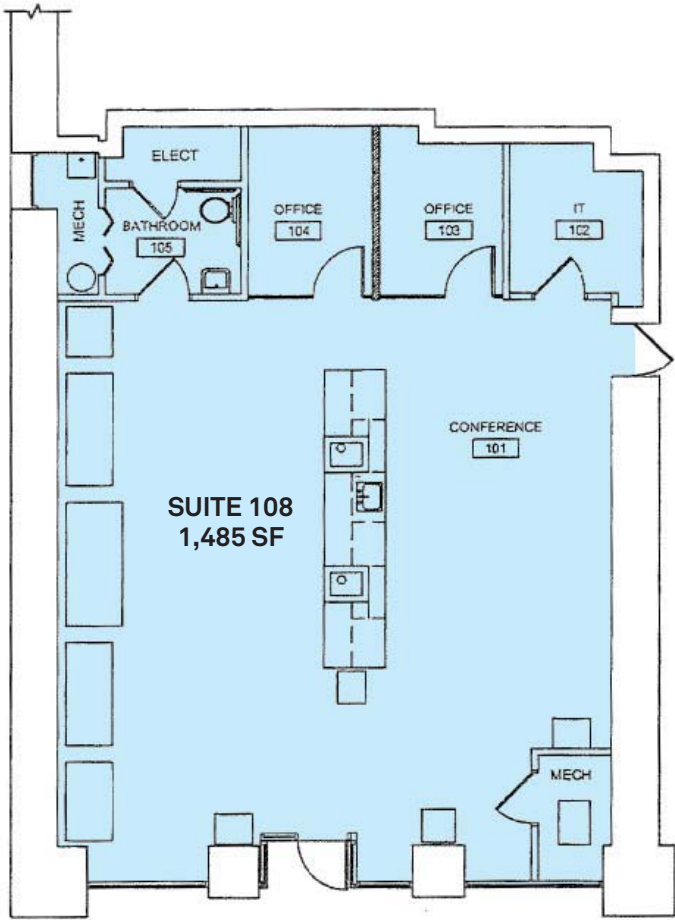
Convenient

To Boji Tower, State Capitol and
Washington Square

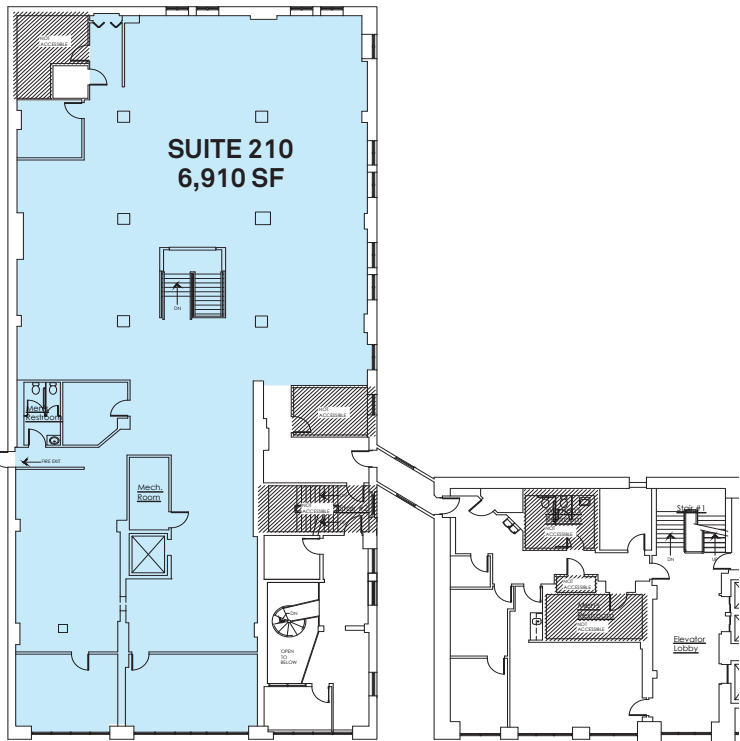


FLOOR PLANS:

FIRST FLOOR



SECOND FLOOR



SIXTH FLOOR

