

FOR LEASE

200 N. Washington Square, Lansing



Professional Office Space Central Business District

SPACE AVAILABLE:

- 2nd floor: 2,750 SF
- 3rd floor: 4,376 SF

PROPERTY INFORMATION:

- 50,391 SF building
- Located in the heart of the Central Business District on the corner of Washington Square and Ottawa Street
- Zoned office
- Flexible terms and floor design
- Space planning available
- Includes all utilities and janitorial
- Space can be designed to suit needs
- Mediteran Café located on lower level

LEASE RATE:

\$24.00

SF/YR, FULL SERVICE

FOR MORE INFORMATION:

Eric F. Rosekrans, CCIM, CPM

Senior Vice President, Office Advisor

Direct: 517 319-9209

eric.rosekrans@martincommercial.com

Thomas Jamieson

Senior Associate, Office Advisor

Direct: 517 319-9235

thomas.jamieson@martincommercial.com

© 2021 MARTIN COMMERCIAL PROPERTIES, INC. ALL RIGHTS RESERVED. THIS INFORMATION HAS BEEN OBTAINED FROM SOURCES BELIEVED RELIABLE BUT HAS NOT BEEN VERIFIED FOR ACCURACY OR COMPLETENESS. YOU SHOULD CONDUCT A CAREFUL, INDEPENDENT INVESTIGATION OF THE PROPERTY AND VERIFY ALL INFORMATION. ANY RELIANCE ON THIS INFORMATION IS SOLELY AT YOUR OWN RISK. MARTIN COMMERCIAL PROPERTIES AND THE MARTIN LOGO ARE SERVICE MARKS OF MARTIN COMMERCIAL PROPERTIES, INC. ALL OTHER MARKS DISPLAYED ON THIS DOCUMENT ARE THE PROPERTY OF THEIR RESPECTIVE OWNERS. PHOTOS HEREIN ARE THE PROPERTY OF THEIR RESPECTIVE OWNERS. USE OF THESE IMAGES WITHOUT THE EXPRESS WRITTEN CONSENT OF THE OWNER IS PROHIBITED.

1111 Michigan Ave., Ste 300

East Lansing, MI 48823

517 351-2200

martincommercial.com



AREA INFORMATION:

5 Minutes

To I-496 & US-127

3 Miles

To Michigan State University

5 Miles

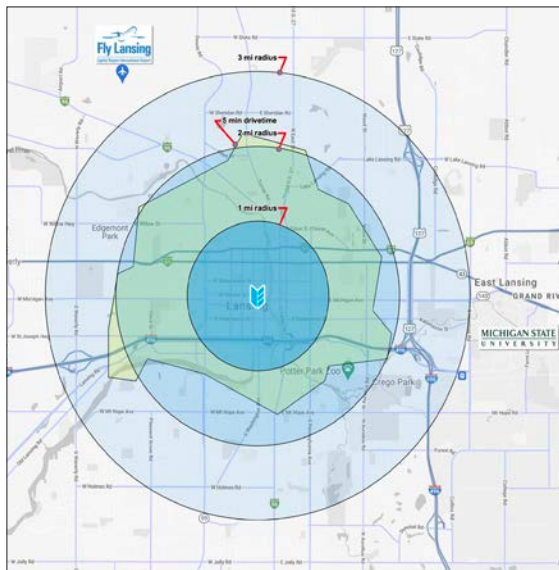
To Capital Region
International Airport

Walking Distance

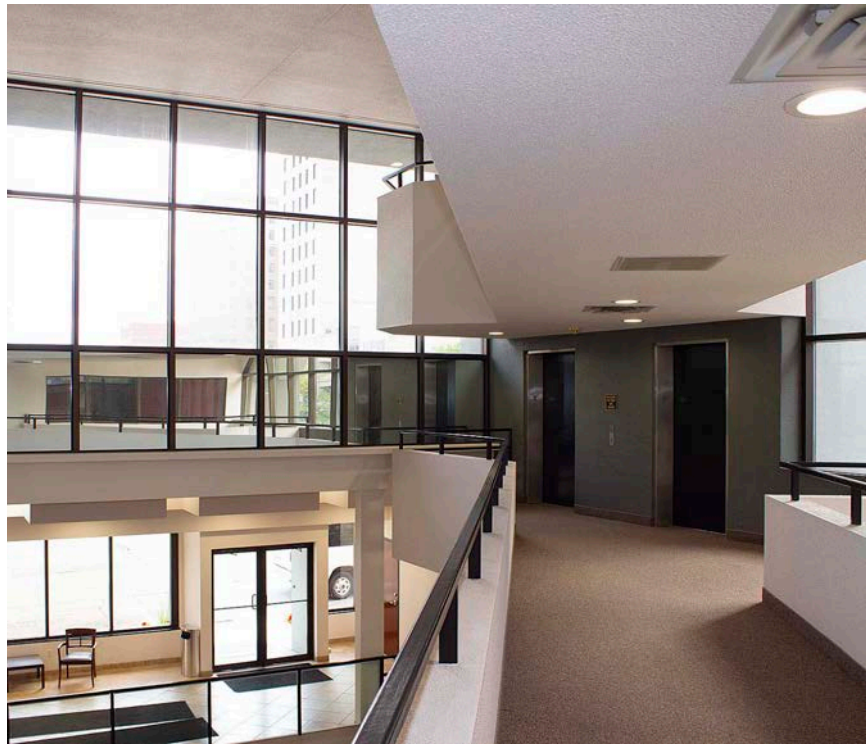
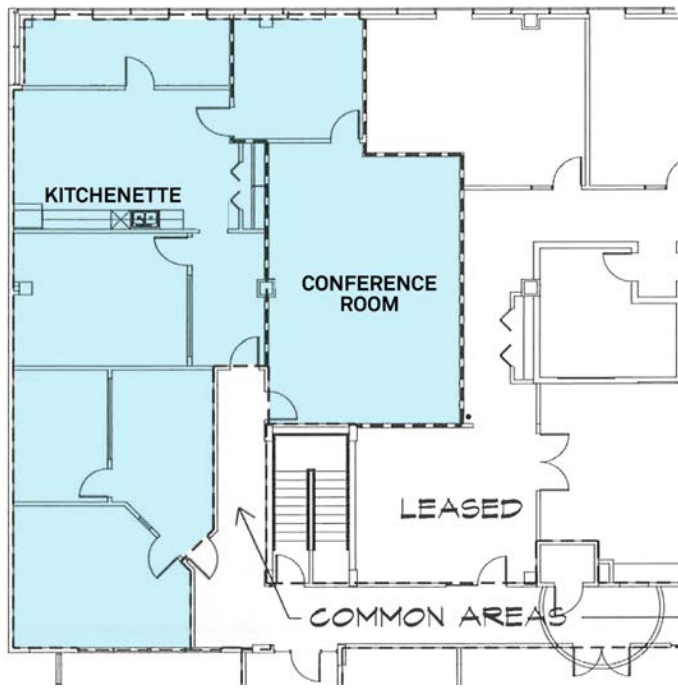
To State Capitol, Lansing Center,
Lansing Community College, and Radisson Hotel

Convenient To

To restaurants, entertainment, and lodging



SECOND FLOOR PLAN:



THIRD FLOOR PLAN:

