

FOR LEASE

222 N. Washington Square, Lansing, MI



Professional Office Space Central Business District



<http://bit.ly/222NWashingtonSq>

SPACE AVAILABLE:

- 3rd floor: 5,000-12,000 SF
- 5th floor: 5,000-12,000 SF

PROPERTY INFORMATION:

- 69,715 SF 5-story building located in the heart of Downtown Lansing with nearby restaurants, services, and governmental offices
- Zoned office
- Includes all utilities and janitorial
- Space can be designed to suit needs
- Flexible terms and floor design
- Space planning available

LEASE RATE:

\$18.00

SF/YR, FULL SERVICE

FOR MORE INFORMATION:

Eric F. Rosekrans, CCIM, CPM

Senior Vice President, Office Advisor
Direct: 517 319-9209
eric.rosekrans@martincommercial.com

Thomas Jamieson

Senior Associate, Office Advisor
Direct: 517 319-9235
thomas.jamieson@martincommercial.com

© 2021 MARTIN COMMERCIAL PROPERTIES, INC. ALL RIGHTS RESERVED. THIS INFORMATION HAS BEEN OBTAINED FROM SOURCES BELIEVED RELIABLE BUT HAS NOT BEEN VERIFIED FOR ACCURACY OR COMPLETENESS. YOU SHOULD CONDUCT A CAREFUL, INDEPENDENT INVESTIGATION OF THE PROPERTY AND VERIFY ALL INFORMATION. ANY RELIANCE ON THIS INFORMATION IS SOLELY AT YOUR OWN RISK. MARTIN COMMERCIAL PROPERTIES AND THE MARTIN LOGO ARE SERVICE MARKS OF MARTIN COMMERCIAL PROPERTIES, INC. ALL OTHER MARKS DISPLAYED ON THIS DOCUMENT ARE THE PROPERTY OF THEIR RESPECTIVE OWNERS. PHOTOS HEREIN ARE THE PROPERTY OF THEIR RESPECTIVE OWNERS. USE OF THESE IMAGES WITHOUT THE EXPRESS WRITTEN CONSENT OF THE OWNER IS PROHIBITED.

1111 Michigan Ave., Ste 300
East Lansing, MI 48823
517 351-2200
martincommercial.com



AREA INFORMATION:

5 Minutes

To I-496 & US-127

5 Miles

To Capital Region International Airport

Adjacent To

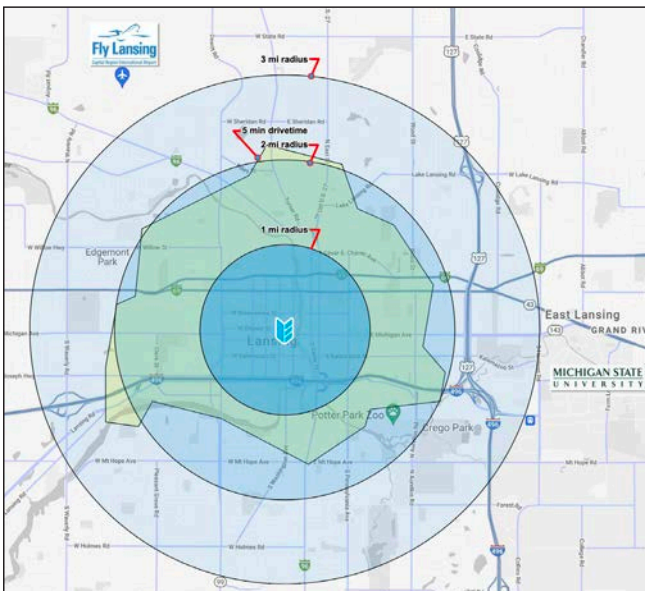
North Grand Parking Ramp

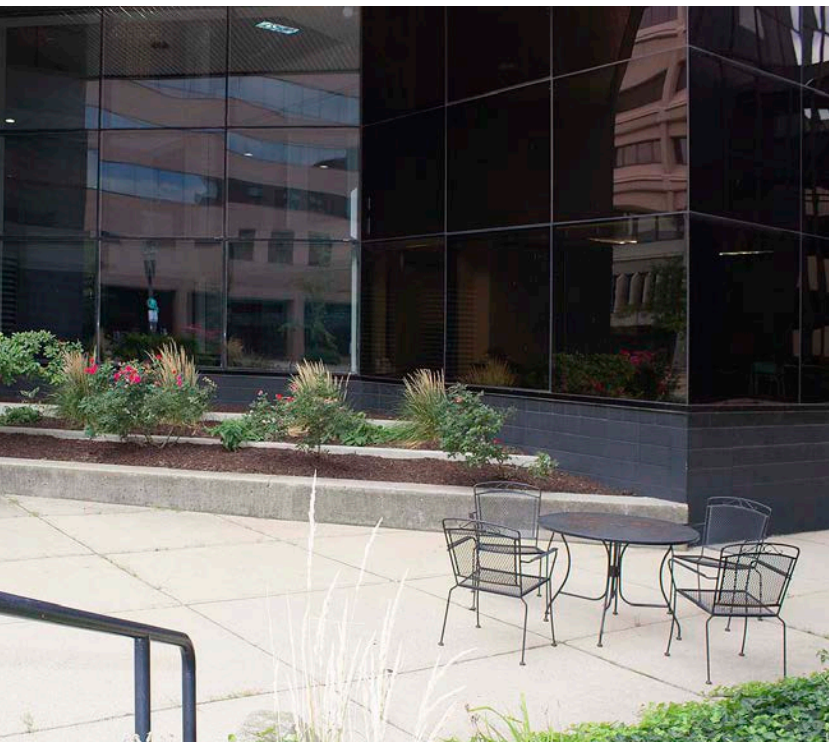
3 Miles

To Michigan State University

Walking Distance

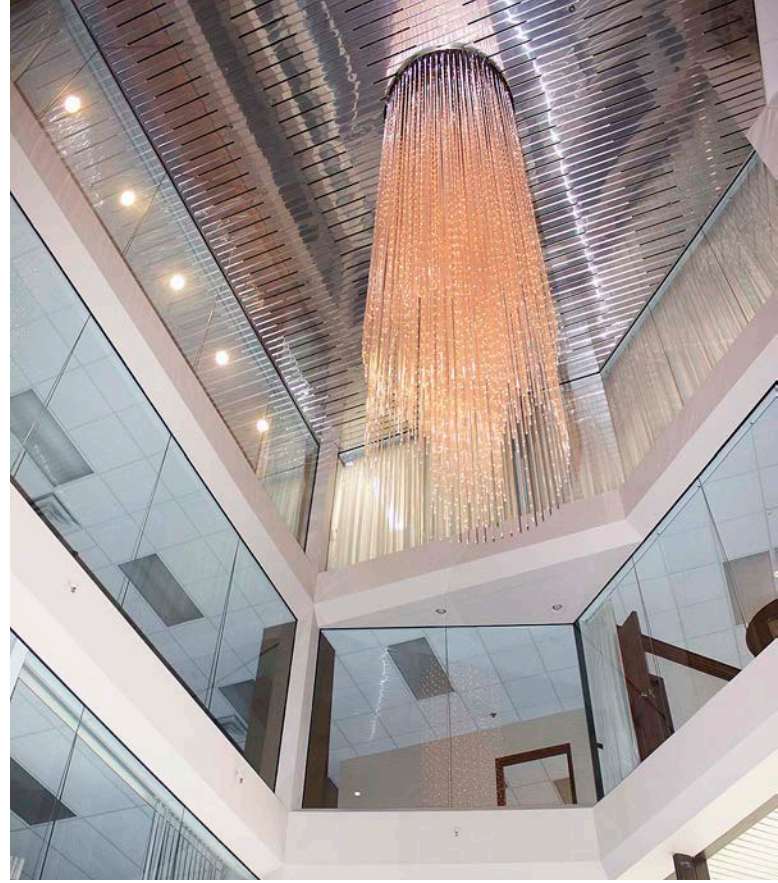
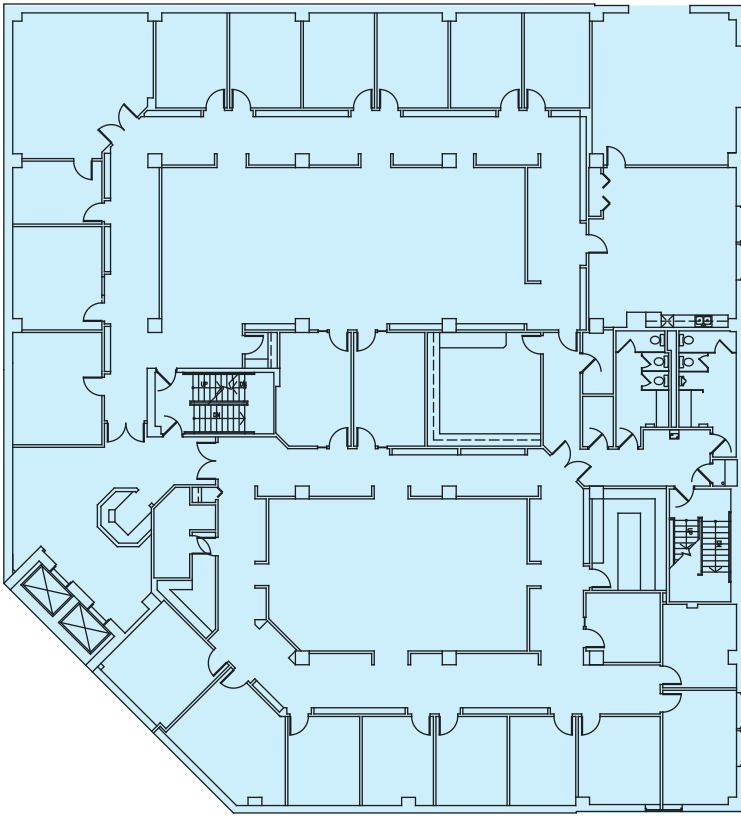
To State Capitol, Lansing Center, Lansing Community College and Radisson Hotel





FLOOR PLANS

3RD FLOOR



5TH FLOOR

