

FOR LEASE

106 W. Allegan Street, Lansing



The Historic Hollister Building, Retail/Office Space Available

AVAILABLE SPACE:

- 1st & 2nd floors combined: 11,239 SF
- Suite 600: 4,000-10,068 SF
- Suite 120: 1,448 SF (ground floor retail store front with plumbing)

PROPERTY OVERVIEW:

- Five-year minimum lease term. renewal options available
- Historic six-story brick building located just one block from the Capitol
- Excellent visibility with high foot traffic
- Parking opportunities along Allegan Street & Washington Square
- Potential signage rights
- Located in the heart of busy downtown shopping district
- Over 96,000 employees within a three-mile radius

LEASE RATE:

\$20.00

PSF/YR, PLUS UTILITIES & JANITORIAL

FOR MORE INFORMATION:

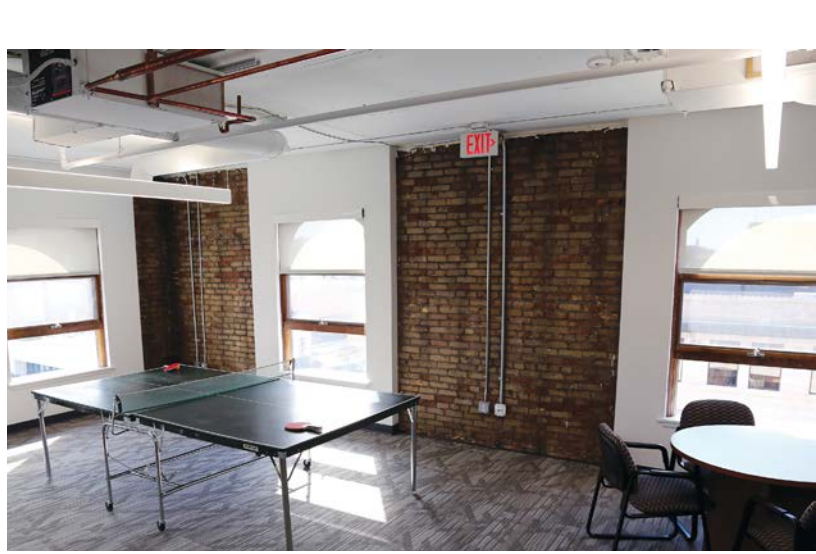
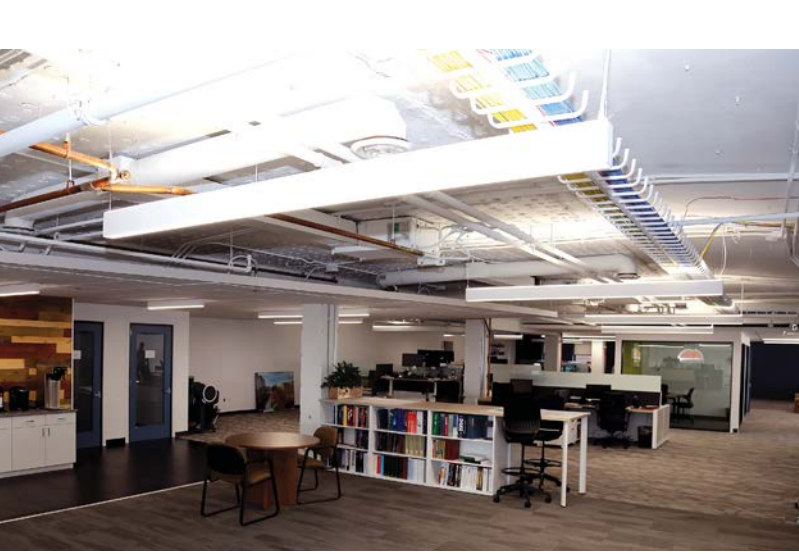
Eric F. Rosekrans, CCIM, CPM

Senior Vice President, Office Advisor
Direct: 517 319-9209

eric.rosekrans@martincommercial.com

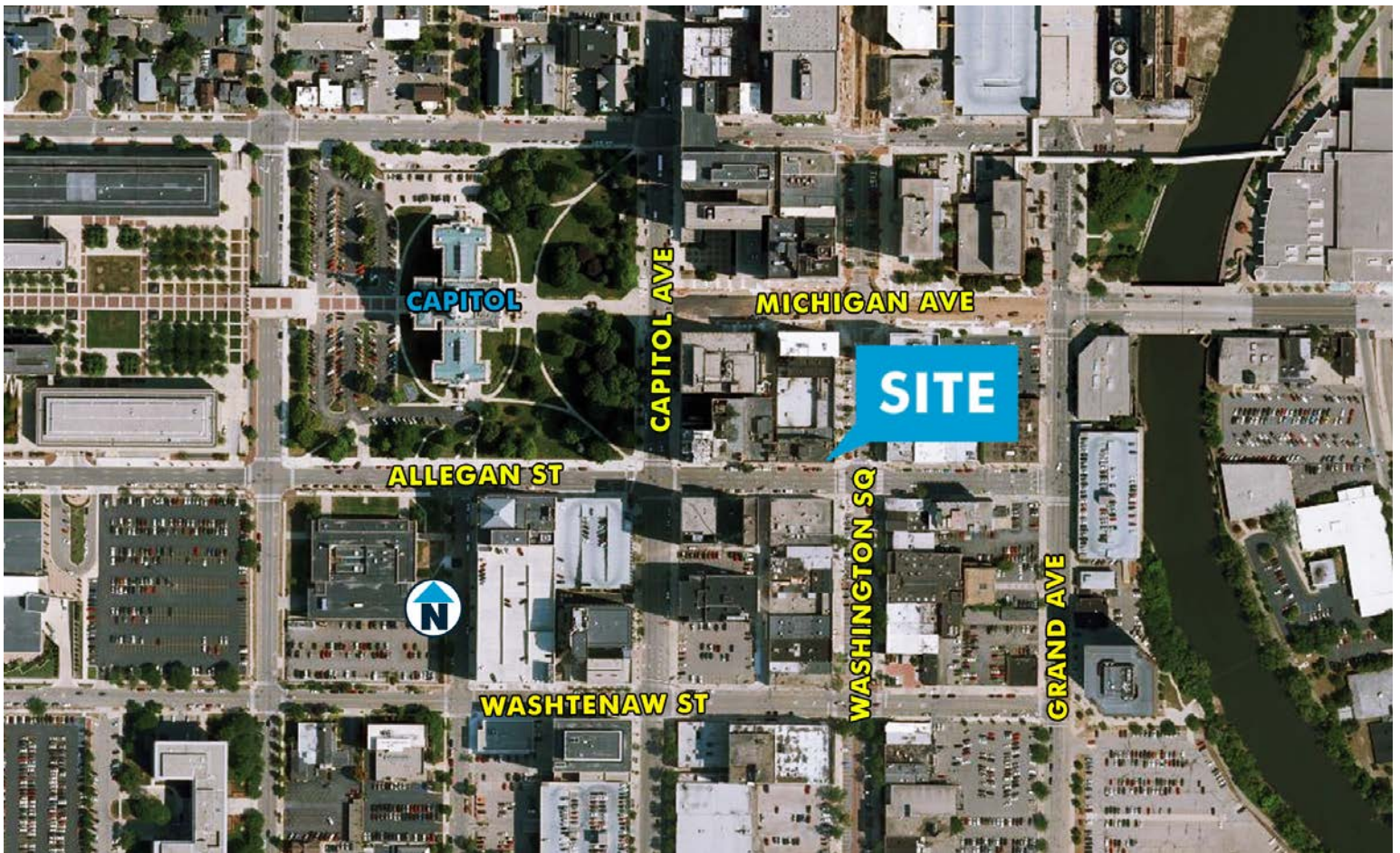
© 2022 MARTIN COMMERCIAL PROPERTIES, INC. ALL RIGHTS RESERVED. THIS INFORMATION HAS BEEN OBTAINED FROM SOURCES BELIEVED RELIABLE BUT HAS NOT BEEN VERIFIED FOR ACCURACY OR COMPLETENESS. YOU SHOULD CONDUCT A CAREFUL, INDEPENDENT INVESTIGATION OF THE PROPERTY AND VERIFY ALL INFORMATION. ANY RELIANCE ON THIS INFORMATION IS SOLELY AT YOUR OWN RISK. MARTIN COMMERCIAL PROPERTIES AND THE MARTIN LOGO ARE SERVICE MARKS OF MARTIN COMMERCIAL PROPERTIES, INC. ALL OTHER MARKS DISPLAYED ON THIS DOCUMENT ARE THE PROPERTY OF THEIR RESPECTIVE OWNERS. PHOTOS HEREIN ARE THE PROPERTY OF THEIR RESPECTIVE OWNERS. USE OF THESE IMAGES WITHOUT THE EXPRESS WRITTEN CONSENT OF THE OWNER IS PROHIBITED.

1111 Michigan Ave., Ste 300
East Lansing, MI 48823
517 351-2200
martincommercial.com



DEMOGRAPHICS			
Proximity	1-Mile	3-Mile	5-Mile
Population	12,115	91,396	202,875
Average Household Income	\$40,840	\$53,331	\$54,239





AREA INFORMATION:

0.1 Mile

State Capitol

1 Mile

I-496 Entrance

4 Miles

Michigan State University

Near

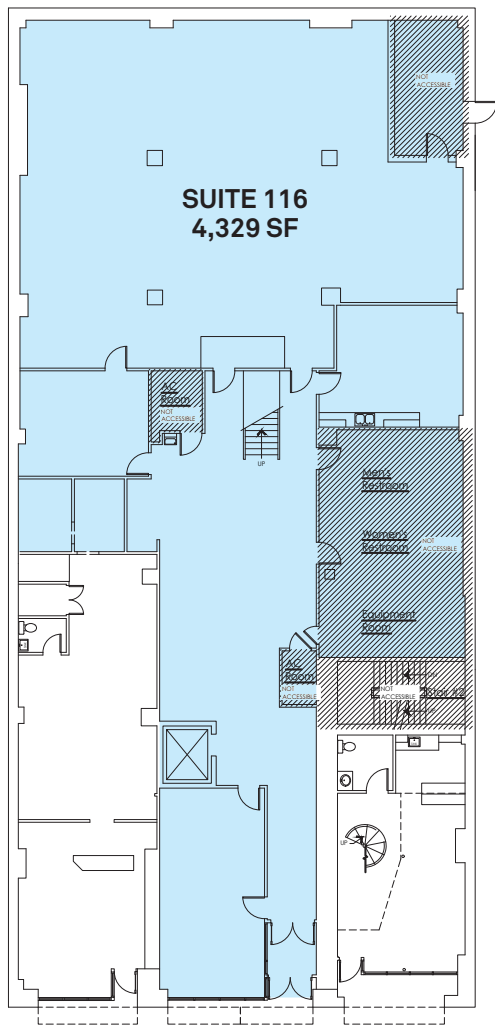
Restaurants, shopping, lodging and entertainment

Convenient

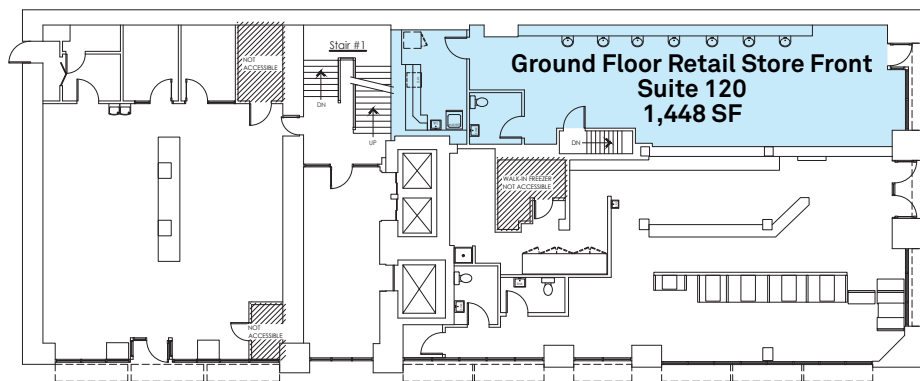
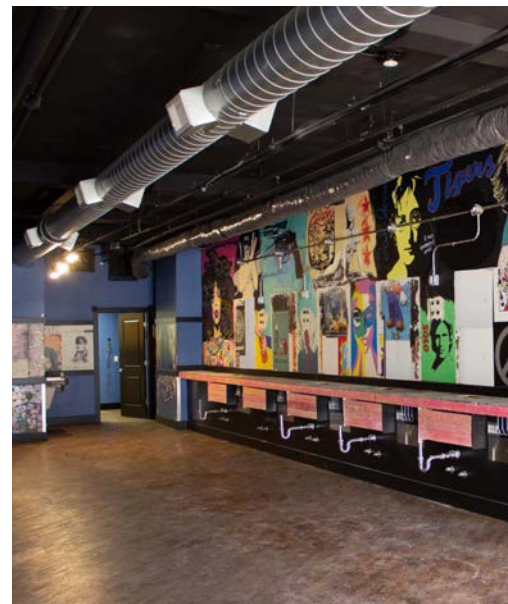
To Boji Tower, State Capitol and Washington Square



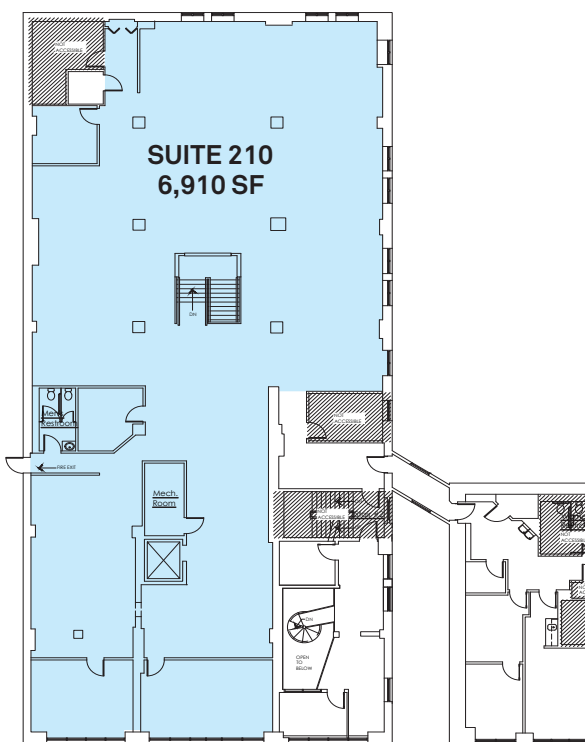
FLOOR PLANS:



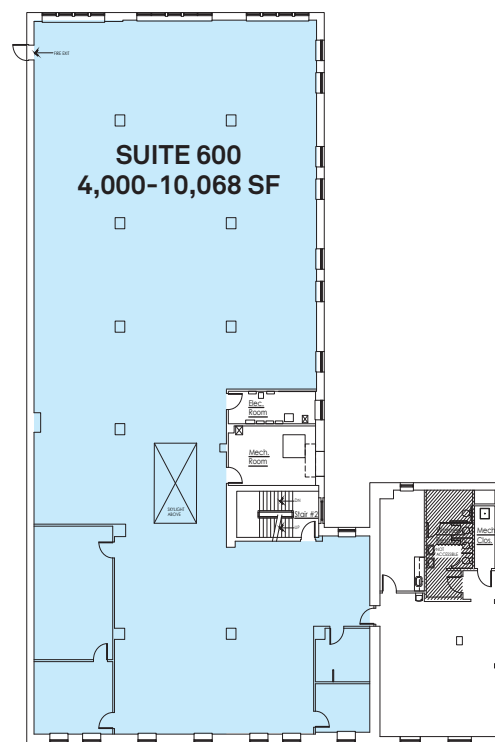
Retail store front, Suite 120



FIRST FLOOR



SECOND FLOOR



SIXTH FLOOR