

FOR LEASE

1000 W. St. Joseph Street, Lansing



Professional Office Space W/ On-Site Parking Newly Remodeled Space Adjacent to I-496

SPACE AVAILABLE:

- Lower level
5,000 SF
- First floor (Suites are combined)
Suite 300: 700-2, 169 SF
Suite 400: 2,487 SF

PROPERTY INFORMATION:

- 9,945 SF modern, single story professional office building
- Lower level includes big event space, game area for team building, call center set up, and team meeting/conference room
- Multiple big windows in all private office suites with lots of natural light
- Remodeled in 2021
- 40 on-site parking spaces for employees and clients
- Zoned office
- Space is in move-in condition and available immediately

LEASE RATE:

LOWER LEVEL

\$12.00

PSF/YR, FULL SERVICE

FIRST FLOOR

\$15.00

PSF/YR, FULL SERVICE

FOR MORE INFORMATION:

Thomas Jamieson

Senior Associate, Office Advisor

Direct: 517 319-9235

thomas.jamieson@martincommercial.com

Eric F. Rosekrans, CCIM, CPM

Senior Vice President, Office Advisor

Direct: 517 319-9209

eric.rosekrans@martincommercial.com

© 2023 MARTIN COMMERCIAL PROPERTIES, INC. ALL RIGHTS RESERVED. THIS INFORMATION HAS BEEN OBTAINED FROM SOURCES BELIEVED RELIABLE BUT HAS NOT BEEN VERIFIED FOR ACCURACY OR COMPLETENESS. YOU SHOULD CONDUCT A CAREFUL, INDEPENDENT INVESTIGATION OF THE PROPERTY AND VERIFY ALL INFORMATION. ANY RELIANCE ON THIS INFORMATION IS SOLELY AT YOUR OWN RISK. MARTIN COMMERCIAL PROPERTIES AND THE MARTIN LOGO ARE SERVICE MARKS OF MARTIN COMMERCIAL PROPERTIES, INC. ALL OTHER MARKS DISPLAYED ON THIS DOCUMENT ARE THE PROPERTY OF THEIR RESPECTIVE OWNERS. PHOTOS HEREIN ARE THE PROPERTY OF THEIR RESPECTIVE OWNERS. USE OF THESE IMAGES WITHOUT THE EXPRESS WRITTEN CONSENT OF THE OWNER IS PROHIBITED.

1111 Michigan Ave., Ste 300

East Lansing, MI 48823

517 351-2200

martincommercial.com



AREA INFORMATION:

1 Minute

To I-496 Interchange

3 Minutes

To State Capitol

1.8 Miles

To Lansing Community College

4.5 Miles

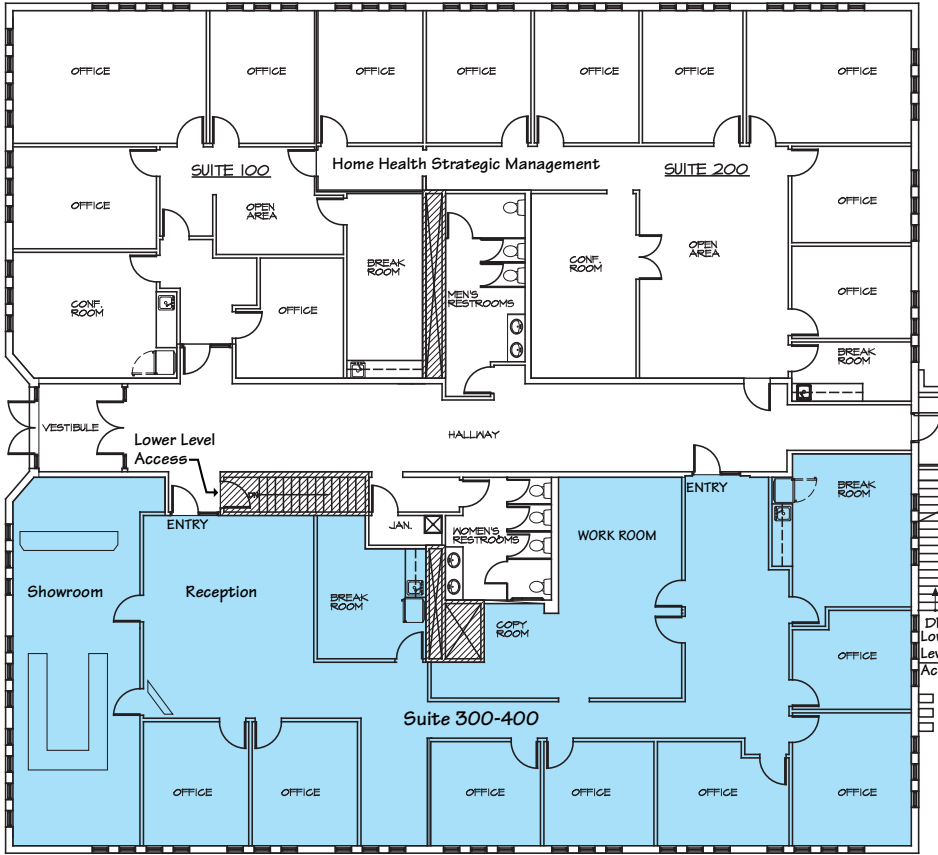
To Michigan State University

Minutes From

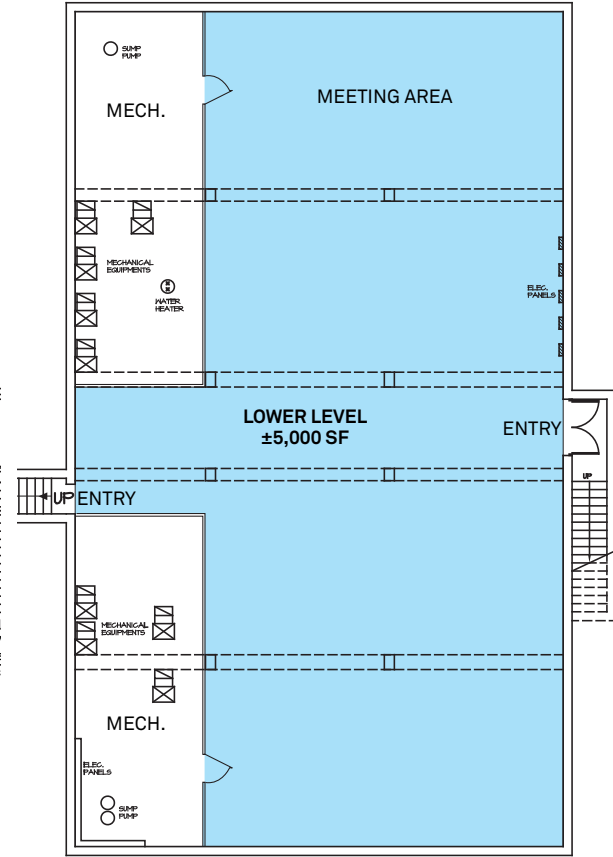
Capital Region International Airport,
I-96, I-69, I-496 and downtown Lansing



Floor Plan



First Floor



Lower Level



First Floor Suite 300-400



Lower Level