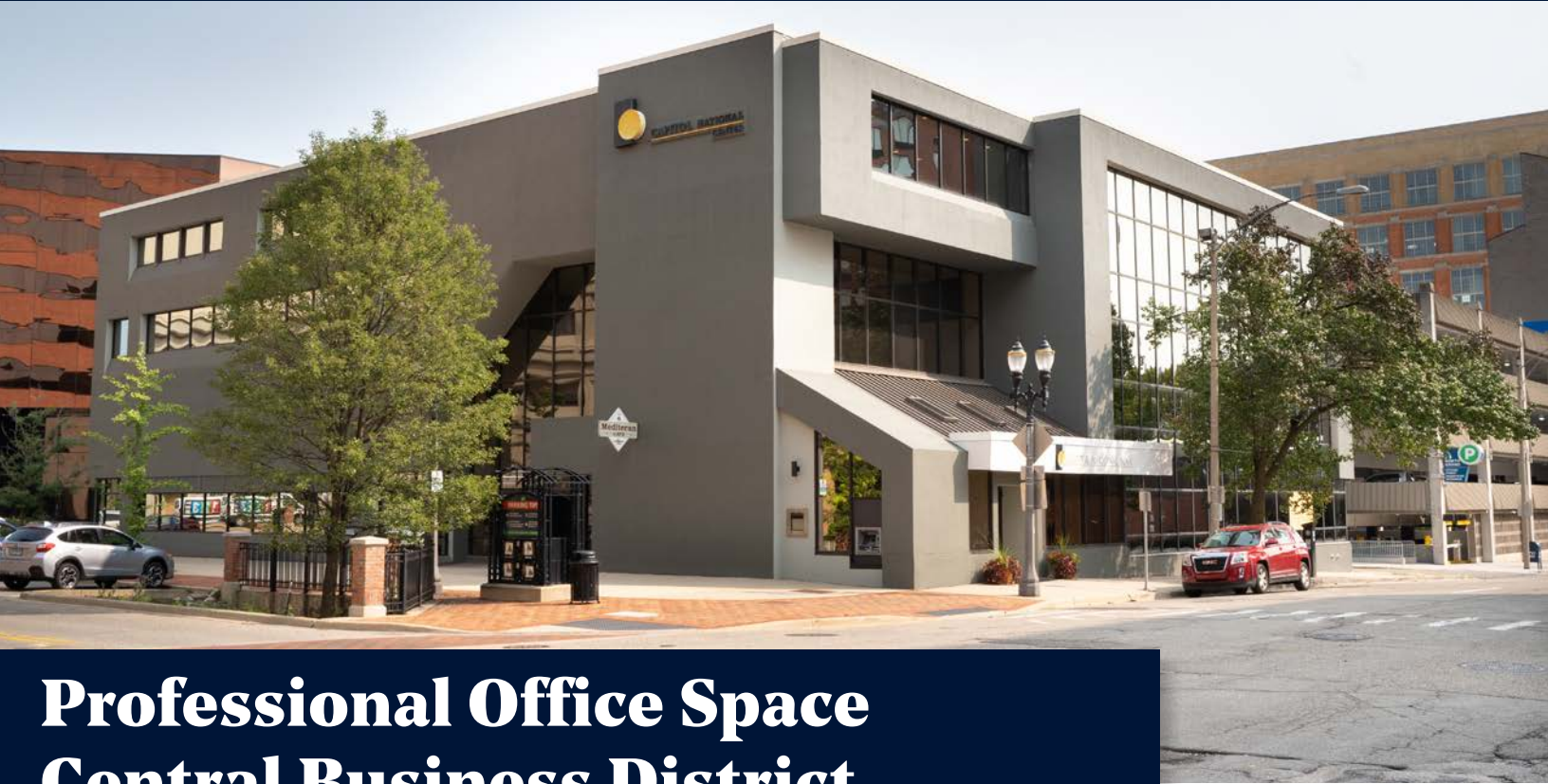


FOR LEASE

200 N. Washington Square, Lansing



Professional Office Space Central Business District

SPACE AVAILABLE:

- 2nd floor: 2,750 SF
- 3rd floor: 4,376 SF

PROPERTY INFORMATION:

- 50,391 SF building
- Located in the heart of the Central Business District on the corner of Washington Square and Ottawa Street
- Zoned office
- Flexible terms and floor design
- Space planning available
- Includes all utilities and janitorial
- Space can be designed to suit needs
- Mediteran Café located on lower level

LEASE RATE:

\$24.00

SF/YR, FULL SERVICE

FOR MORE INFORMATION:

Eric F. Rosekrans, CCIM, CPM

Executive Vice President

Direct: 517 319-9209

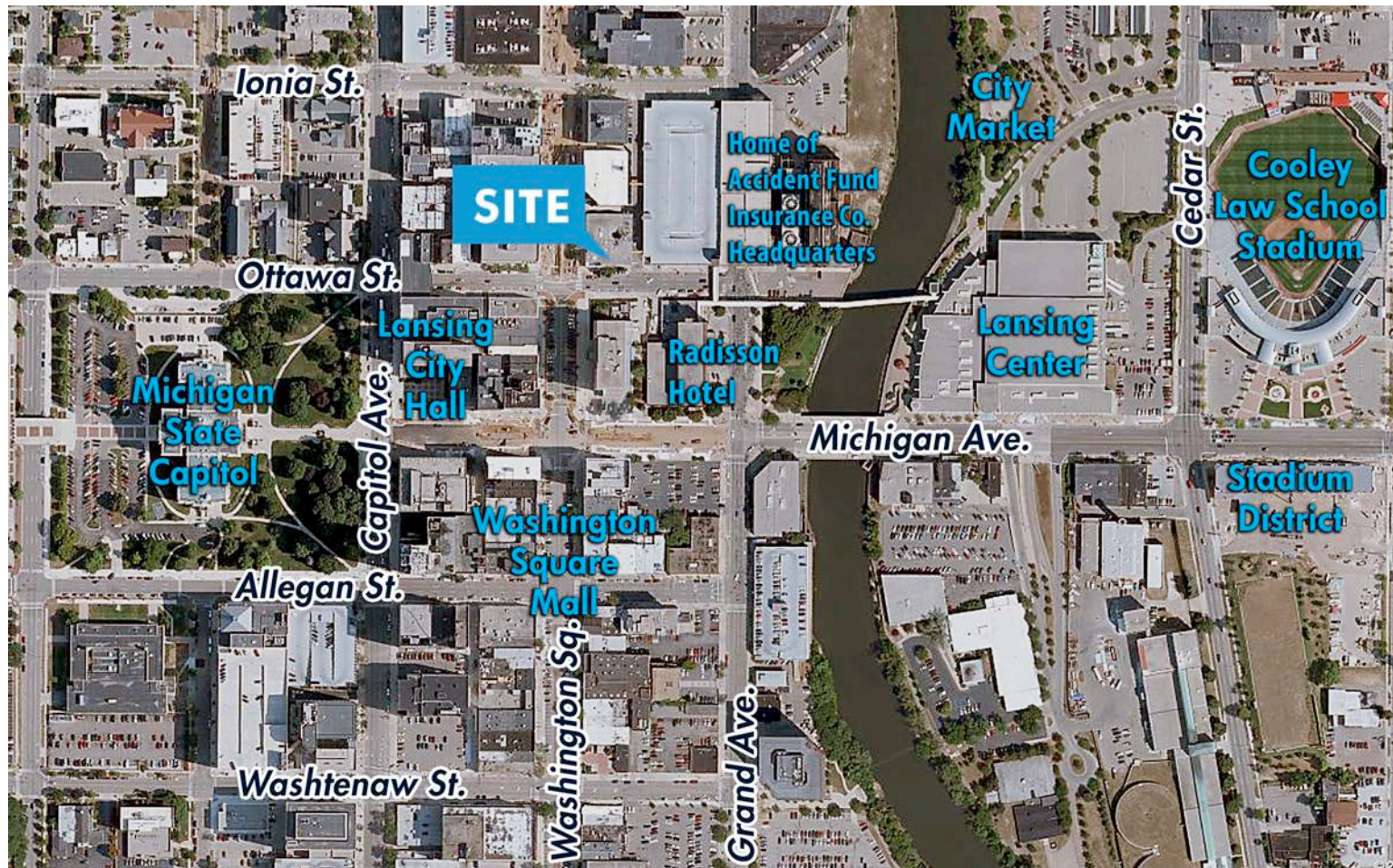
eric.rosekrans@martincommercial.com

Thomas Jamieson, SIOR

Senior Vice President, Office Advisor

Direct: 517 319-9235

thomas.jamieson@martincommercial.com



AREA INFORMATION:

5 Minutes

To I-496 & US-127

3 Miles

To Michigan State University

5 Miles

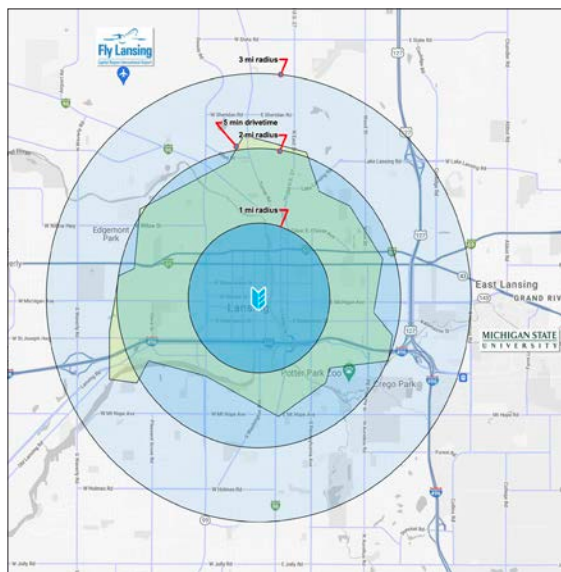
To Capital Region
International Airport

Walking Distance

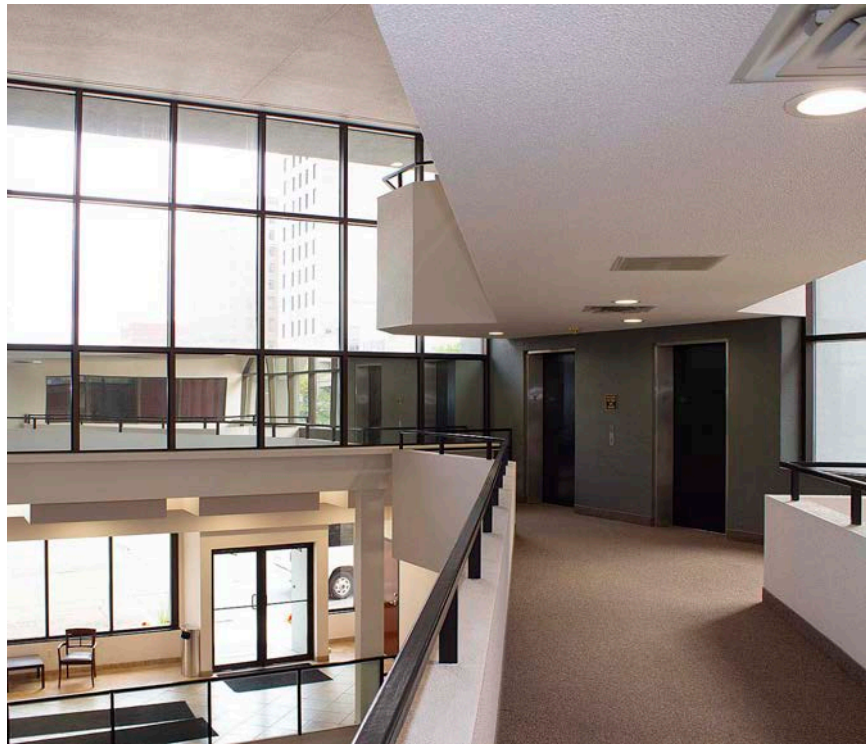
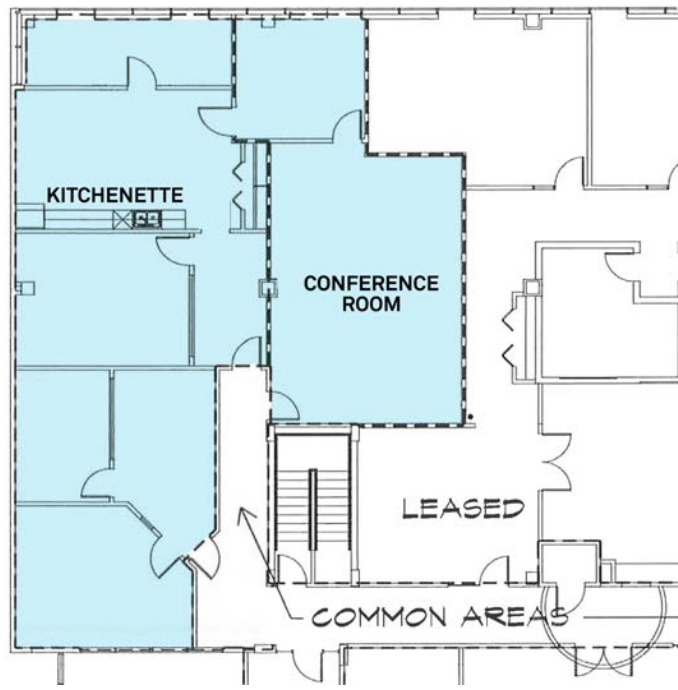
To State Capitol, Lansing Center,
Lansing Community College, and Radisson Hotel

Convenient To

To restaurants, entertainment, and lodging



SECOND FLOOR PLAN:



THIRD FLOOR PLAN:

