

FOR LEASE

1000 W. St. Joseph Street, Lansing



Professional Office Space W/ On-Site Parking Newly Remodeled Space Adjacent to I-496

SPACE AVAILABLE:

- Suite 100: 2,400 SF & Suite 200: 2,400 SF (can be combined to 4,800 SF)
- Lower level: 5,000 SF

PROPERTY INFORMATION:

- 9,945 SF modern, single story professional office building
- Lower level includes big event space, game area for team building, call center set up, and team meeting/conference room
- Remodeled in 2021
- 40 on-site parking spaces for employees and clients
- Zoned office
- Space is in move-in condition and available immediately

LEASE RATE:

LOWER LEVEL

\$12.00

PSF/YR, FULL SERVICE

SUITE 100 & 200

\$14.00

PSF/YR, PLUS UTILITIES & JANITORIAL

FOR MORE INFORMATION:

Thomas Jamieson, SIOR

Senior Vice President, Office Advisor

Direct: 517 319-9235

thomas.jamieson@martincommercial.com

Eric F. Rosekrans, CCIM, CPM

Executive Vice President

Direct: 517 319-9209

eric.rosekrans@martincommercial.com



AREA INFORMATION:

1 Minute

To I-496 Interchange

3 Minutes

To State Capitol

1.8 Miles

To Lansing Community College

4.5 Miles

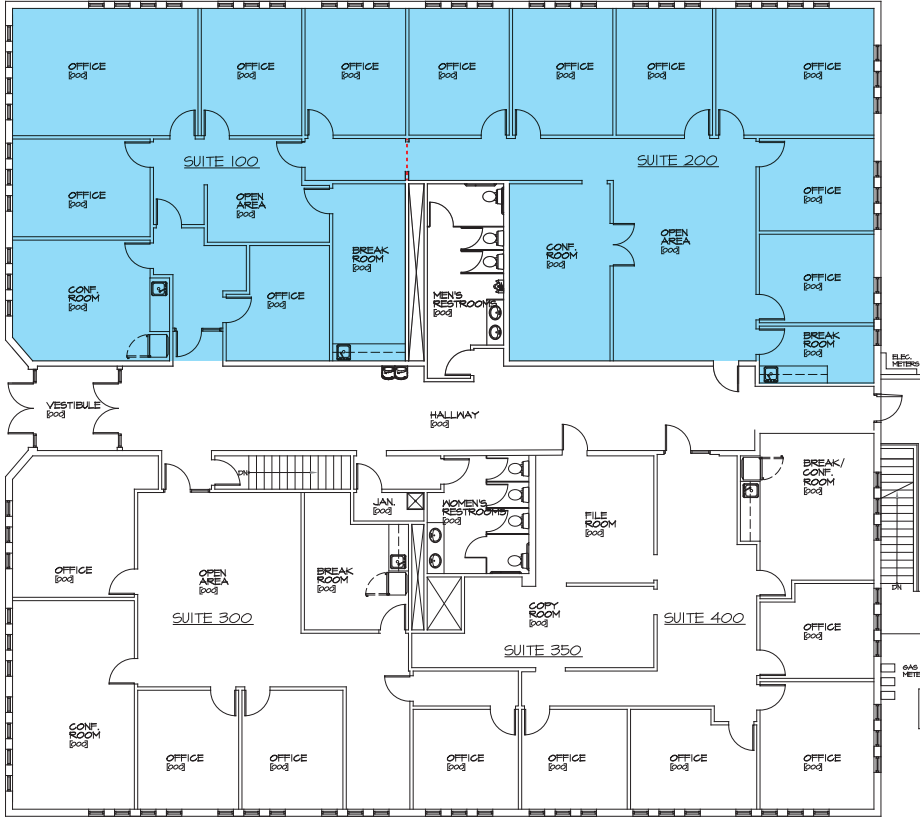
To Michigan State University

Minutes From

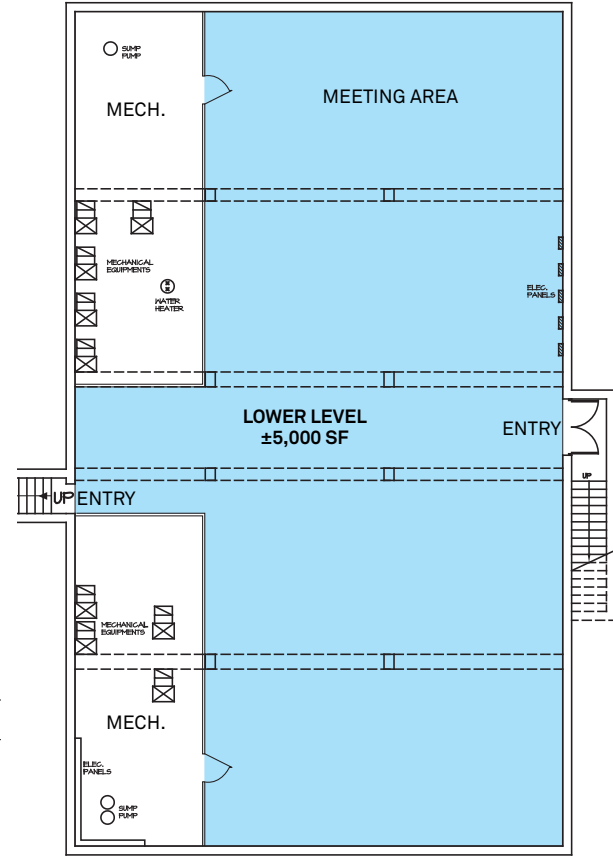
Capital Region International Airport,
I-96, I-69, I-496 and downtown Lansing



Floor Plan



First Floor



Lower Level



First Floor



Lower Level



First Floor



Lower Level