

# FOR LEASE

222 N. Washington Square, Lansing, MI



## Professional Office Space Central Business District



<http://bit.ly/222NWashingtonSq>

### SPACE AVAILABLE:

- 1st floor: 5,000-12,000 SF
- 2nd floor: 5,000-12,000 SF
- 3rd floor: 5,000-12,000 SF
- 5th floor: 5,000-12,000 SF
- 1st, 2nd and 3rd floor can be combined

### PROPERTY INFORMATION:

- 69,715 SF 5-story building located in the heart of Downtown Lansing with nearby restaurants, services, and governmental offices
- Zoned office
- Includes all utilities and janitorial
- Space can be designed to suit needs
- Flexible terms and floor design
- Space planning available

### LEASE RATE:

**\$18.00**  
PSF/YR, FULL SERVICE

### FOR MORE INFORMATION:

#### **Eric F. Rosekrans, CCIM, CPM**

Executive Vice President  
Direct: 517 319-9209  
eric.rosekrans@martincommercial.com

#### **Thomas Jamieson, SIOR**

Senior Vice President, Office Advisor  
Direct: 517 319-9235  
thomas.jamieson@martincommercial.com

© 2023 MARTIN COMMERCIAL PROPERTIES, INC. ALL RIGHTS RESERVED. THIS INFORMATION HAS BEEN OBTAINED FROM SOURCES BELIEVED RELIABLE BUT HAS NOT BEEN VERIFIED FOR ACCURACY OR COMPLETENESS. YOU SHOULD CONDUCT A CAREFUL, INDEPENDENT INVESTIGATION OF THE PROPERTY AND VERIFY ALL INFORMATION. ANY RELIANCE ON THIS INFORMATION IS SOLELY AT YOUR OWN RISK. MARTIN COMMERCIAL PROPERTIES AND THE MARTIN LOGO ARE SERVICE MARKS OF MARTIN COMMERCIAL PROPERTIES, INC. ALL OTHER MARKS DISPLAYED ON THIS DOCUMENT ARE THE PROPERTY OF THEIR RESPECTIVE OWNERS. PHOTOS HEREIN ARE THE PROPERTY OF THEIR RESPECTIVE OWNERS. USE OF THESE IMAGES WITHOUT THE EXPRESS WRITTEN CONSENT OF THE OWNER IS PROHIBITED.

1111 Michigan Ave., Ste 300  
East Lansing, MI 48823  
517 351-2200  
[martincommercial.com](http://martincommercial.com)





**AREA INFORMATION:**

**5 Minutes**

To I-496 & US-127

**5 Miles**

To Capital Region International Airport

**Adjacent To**

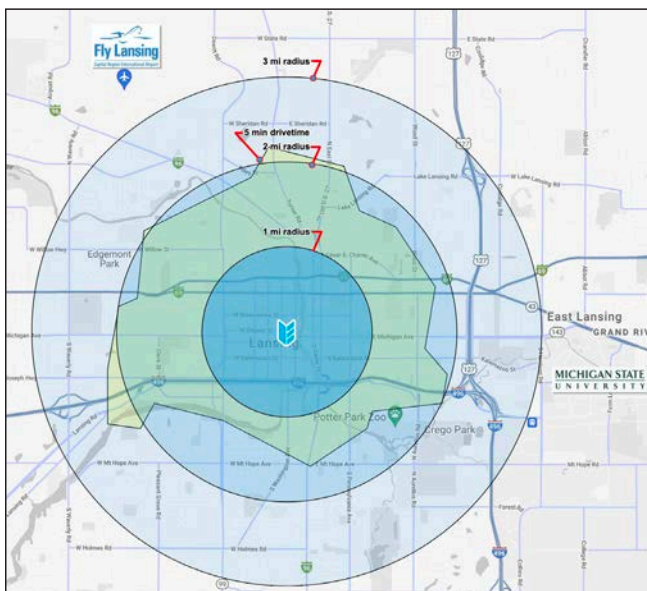
North Grand Parking Ramp

**3 Miles**

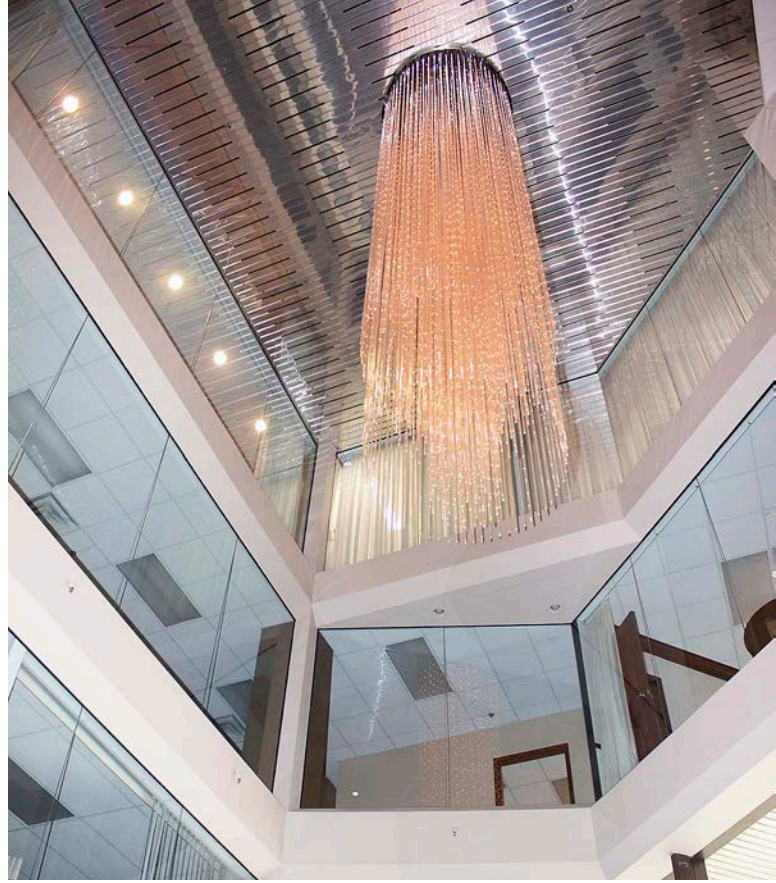
To Michigan State University

**Walking Distance**

To State Capitol, Lansing Center,  
Lansing Community College and Radisson Hotel



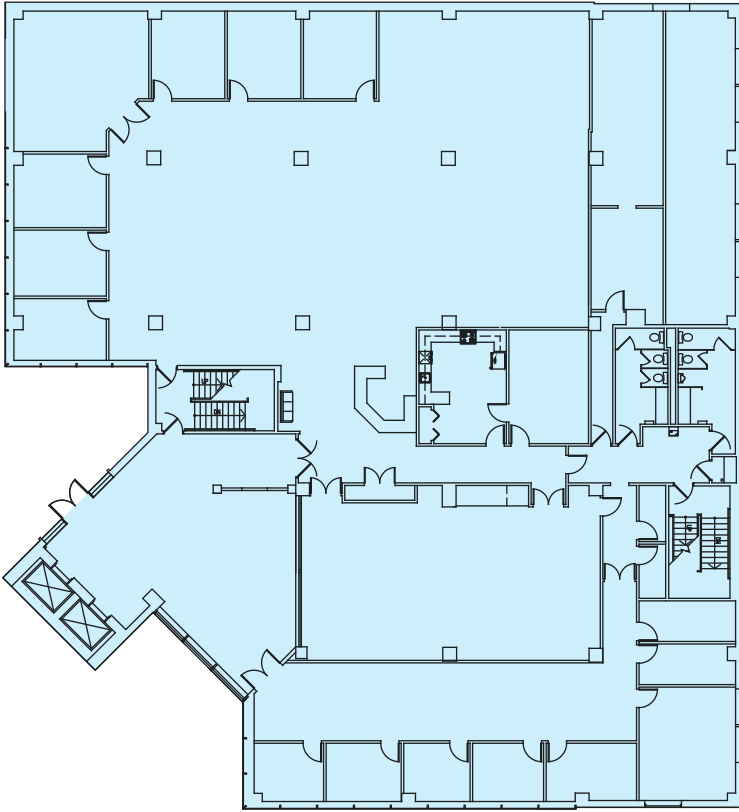




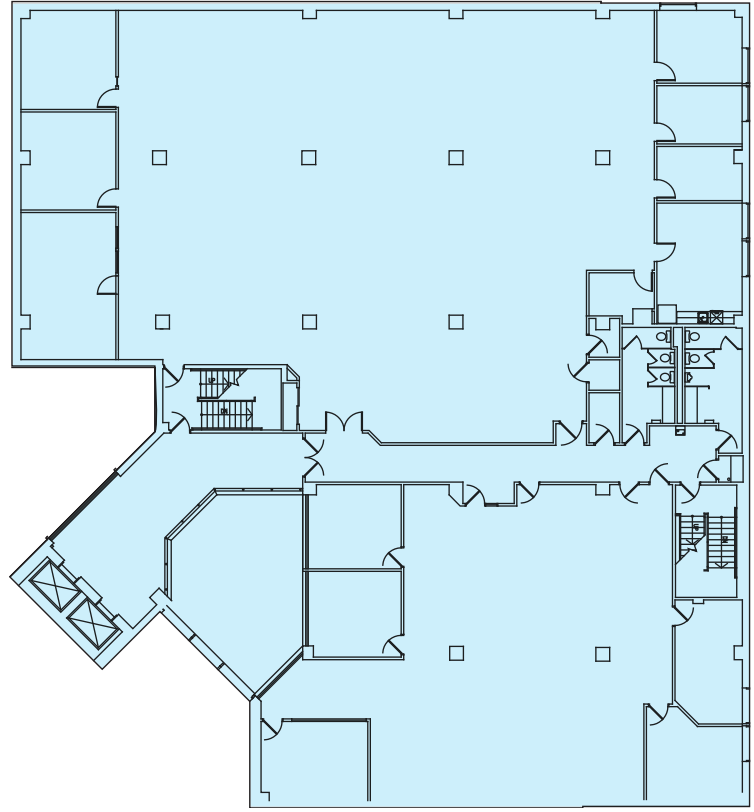


# FLOOR PLANS

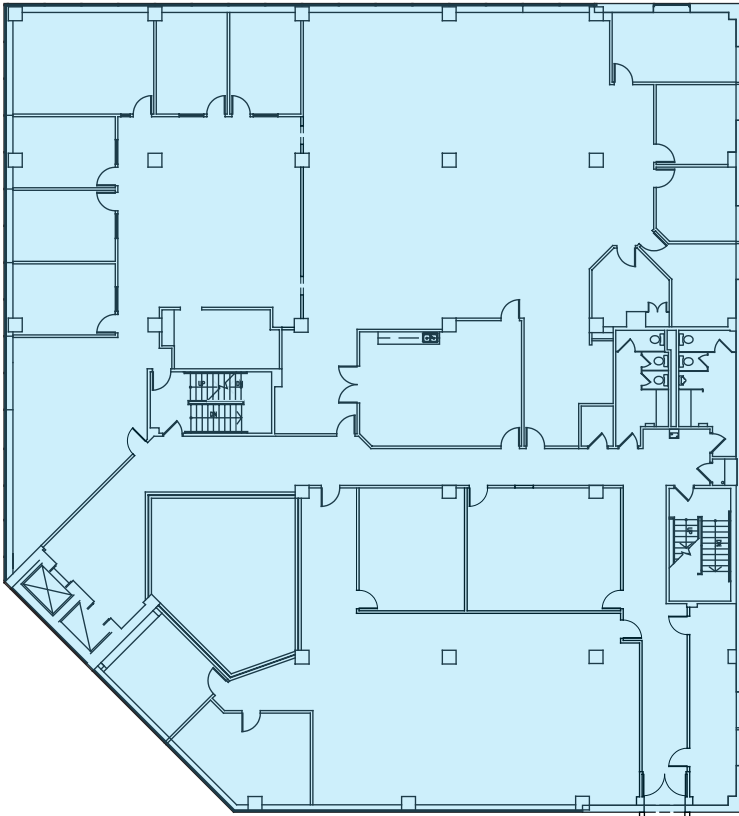
## 1ST FLOOR



## 2ND FLOOR



## 3RD FLOOR



## 5TH FLOOR

