

FOR LEASE

809 Center Street, Lansing, MI



Professional Office Space Corner of Oakland Avenue and Center Street

SPACE AVAILABLE:

- Lower Level 100-1,200± SF (See page 3 for rates)
- Ground Floor Suite 1A: 1,560 SF

PROPERTY INFORMATION:

- 22,200 SF professionally managed office building on 1.46 acres
- Built in 1966 and renovated in 1996
- Single office suites available on lower level
- 74 on-site parking spaces
- Multiple access points on Center Street
- Road side directory signage
- Access to Lansing River Trail
- Excellent exposure on Oakland Avenue averaging over 10,000 vehicles per day
- Easy access to downtown with free parking

LEASE RATE:

\$14.00

PSF/YR, +JANITORIAL

LOWER LEVEL SEE PAGE 3 FOR RATES

FOR MORE INFORMATION:

Eric F. Rosekrans, CCIM, CPM

Executive Vice President

Direct: 517 319-9209

eric.rosekrans@martincommercial.com

Thomas Jamieson, SIOR

Senior Vice President, Office Advisor

Direct: 517 319-9235

thomas.jamieson@martincommercial.com

© 2024 MARTIN COMMERCIAL PROPERTIES, INC. ALL RIGHTS RESERVED. THIS INFORMATION HAS BEEN OBTAINED FROM SOURCES BELIEVED RELIABLE BUT HAS NOT BEEN VERIFIED FOR ACCURACY OR COMPLETENESS. YOU SHOULD CONDUCT A CAREFUL, INDEPENDENT INVESTIGATION OF THE PROPERTY AND VERIFY ALL INFORMATION. ANY RELIANCE ON THIS INFORMATION IS SOLELY AT YOUR OWN RISK. MARTIN COMMERCIAL PROPERTIES AND THE MARTIN LOGO ARE SERVICE MARKS OF MARTIN COMMERCIAL PROPERTIES, INC. ALL OTHER MARKS DISPLAYED ON THIS DOCUMENT ARE THE PROPERTY OF THEIR RESPECTIVE OWNERS. PHOTOS HEREIN ARE THE PROPERTY OF THEIR RESPECTIVE OWNERS. USE OF THESE IMAGES WITHOUT THE EXPRESS WRITTEN CONSENT OF THE OWNER IS PROHIBITED.

1111 Michigan Ave., Ste 300

East Lansing, MI 48823

517 351-2200

martincommercial.com



AREA INFORMATION:

0.2 Miles

To E. Saginaw Street

0.9 Miles

To Lansing Community College

1.9 Miles

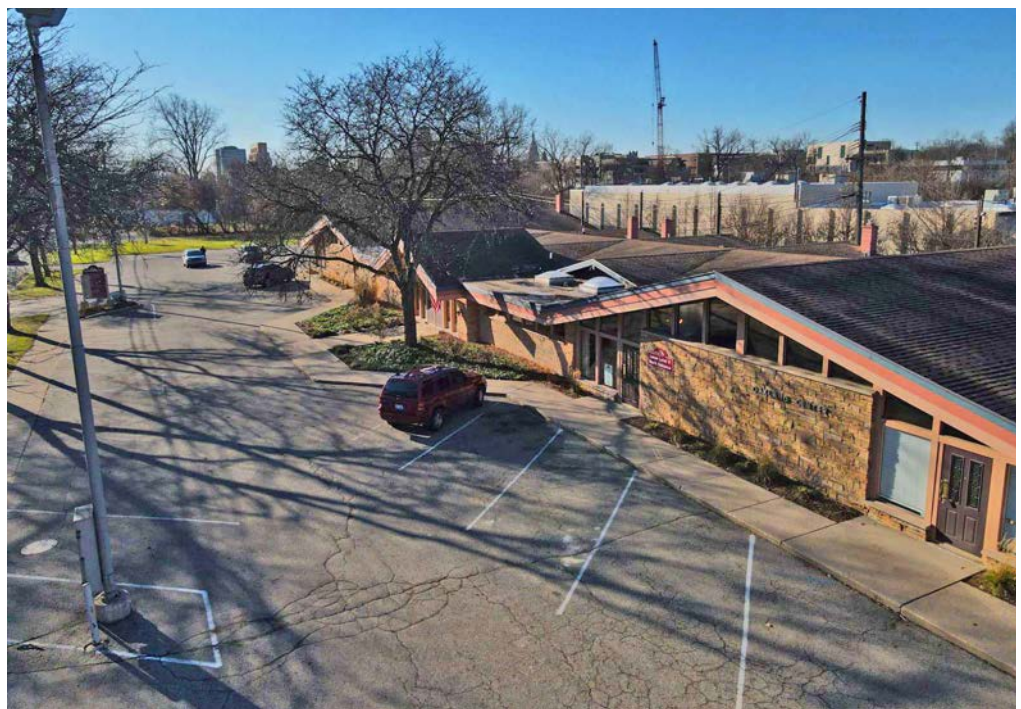
To I-496 Highway Entrance

3.4 Miles

To Michigan State University

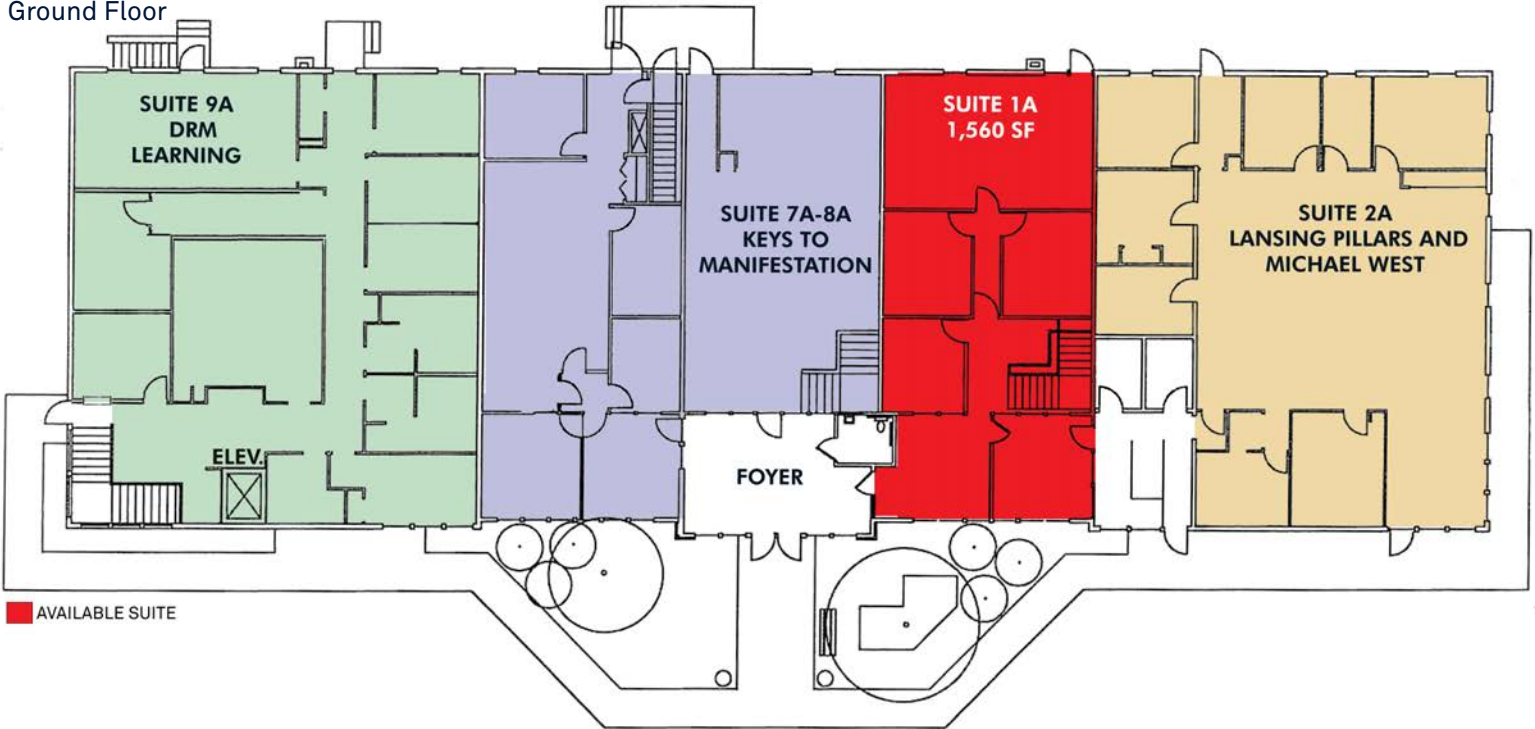
Minutes From

Restaurants, services, and lodging

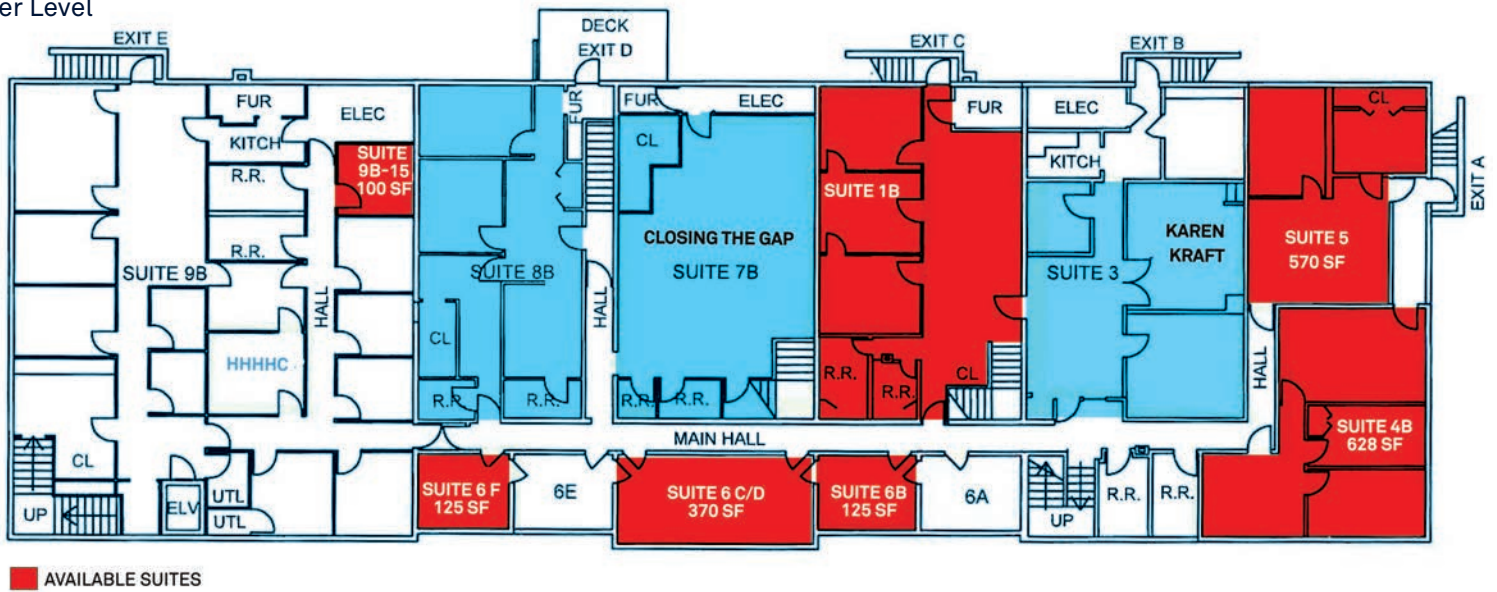


FLOOR PLANS

Ground Floor



Lower Level



Lower Level Rates

Suite	Monthly Rent
1B	\$1,000.00
4B	\$700.00
5	\$600.00
6B	\$200.00
6C/D	\$350.00
6F	\$200.00
9B-15	\$150.00