

# FOR LEASE

200 N. Washington Square, Lansing



## Professional Office Space Central Business District

### SPACE AVAILABLE:

- Lower Level: 3,312 SF
- 2nd Floor: 2,750 SF
- 3rd Floor: 4,376 SF

### PROPERTY INFORMATION:

- 50,391 SF building
- Located in the heart of the Central Business District on the corner of Washington Square and Ottawa Street
- Zoned office
- Flexible terms and floor design
- Space planning available
- Includes all utilities and janitorial
- Space can be designed to suit needs
- Mediterranean Café located on lower level



[Click to see 2nd Floor Tour](#)

[Click to see Lower Level Tour](#)

LEASE RATE:

# \$24.00

SF/YR, FULL SERVICE

### FOR MORE INFORMATION:

**Eric F. Rosekrans, CCIM, CPM**

Executive Vice President

Direct: 517 319-9209

[eric.rosekrans@martincommercial.com](mailto:eric.rosekrans@martincommercial.com)

**Thomas Jamieson, SIOR**

Senior Vice President, Office Advisor

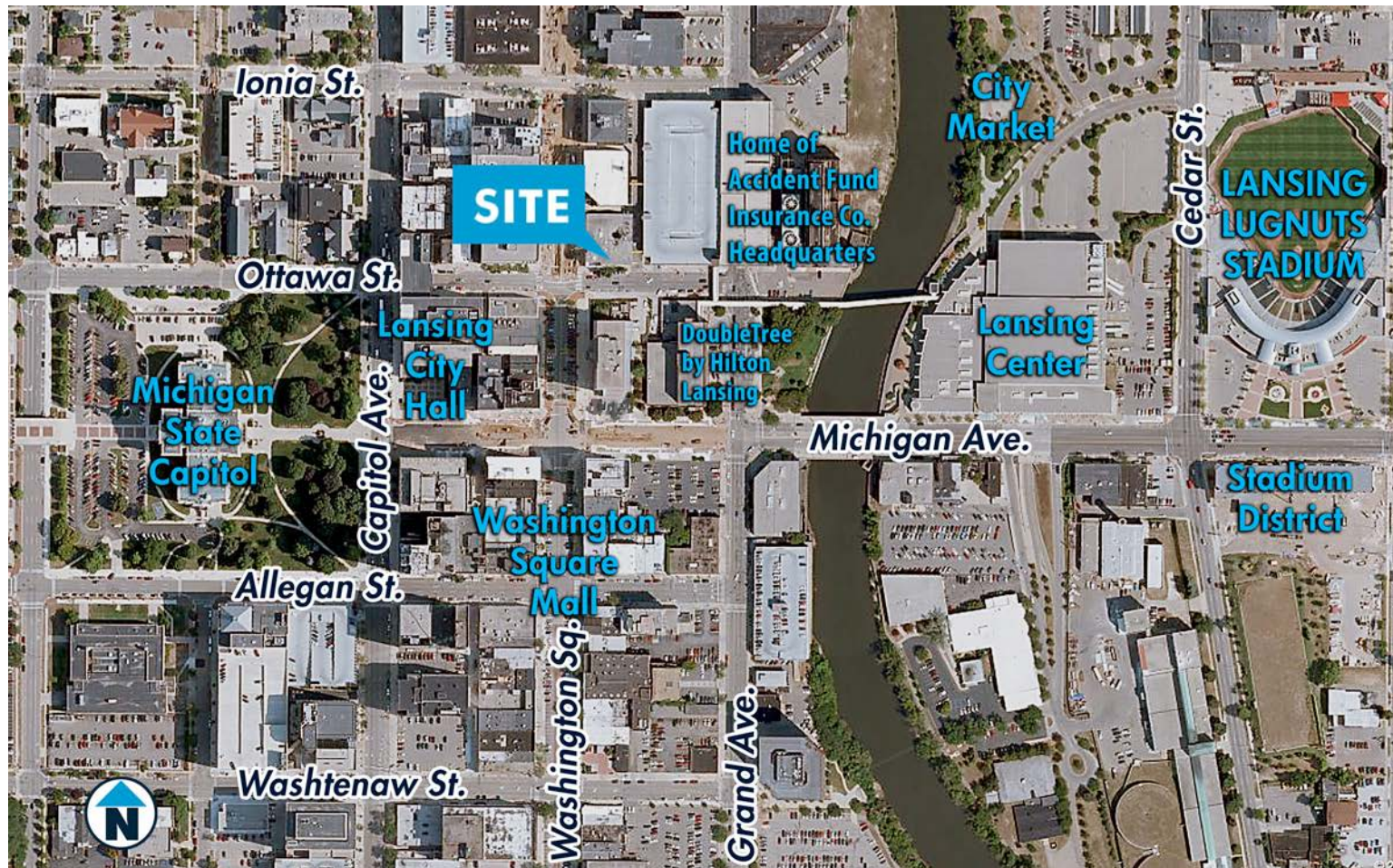
Direct: 517 319-9235

[thomas.jamieson@martincommercial.com](mailto:thomas.jamieson@martincommercial.com)

© 2024 MARTIN COMMERCIAL PROPERTIES, INC. ALL RIGHTS RESERVED. THIS INFORMATION HAS BEEN OBTAINED FROM SOURCES BELIEVED RELIABLE BUT HAS NOT BEEN VERIFIED FOR ACCURACY OR COMPLETENESS. YOU SHOULD CONDUCT A CAREFUL, INDEPENDENT INVESTIGATION OF THE PROPERTY AND VERIFY ALL INFORMATION. ANY RELIANCE ON THIS INFORMATION IS SOLELY AT YOUR OWN RISK. MARTIN COMMERCIAL PROPERTIES AND THE MARTIN LOGO ARE SERVICE MARKS OF MARTIN COMMERCIAL PROPERTIES, INC. ALL OTHER MARKS DISPLAYED ON THIS DOCUMENT ARE THE PROPERTY OF THEIR RESPECTIVE OWNERS. PHOTOS HEREIN ARE THE PROPERTY OF THEIR RESPECTIVE OWNERS. USE OF THESE IMAGES WITHOUT THE EXPRESS WRITTEN CONSENT OF THE OWNER IS PROHIBITED.

1111 Michigan Ave., Ste 300  
East Lansing, MI 48823  
517 351-2200  
[martincommercial.com](http://martincommercial.com)





#### AREA INFORMATION:

**5 Minutes**

To I-496 & US-127

**3 Miles**

To Michigan State University

**5 Miles**

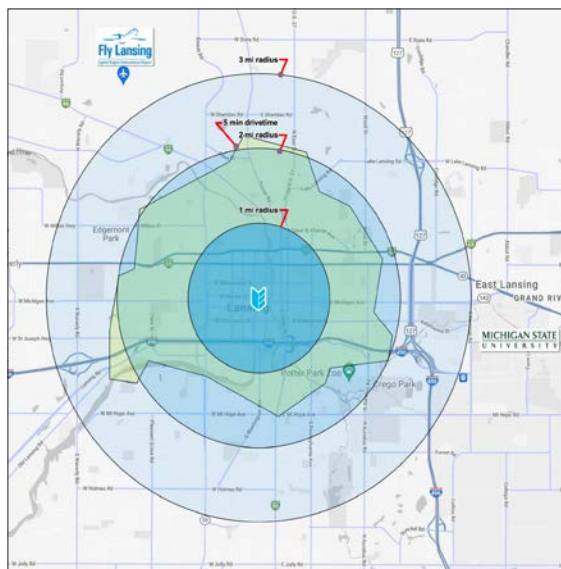
To Capital Region  
International Airport

**Walking Distance**

To State Capitol, Lansing Center,  
Lansing Community College, and DoubleTree  
by Hilton Hotel

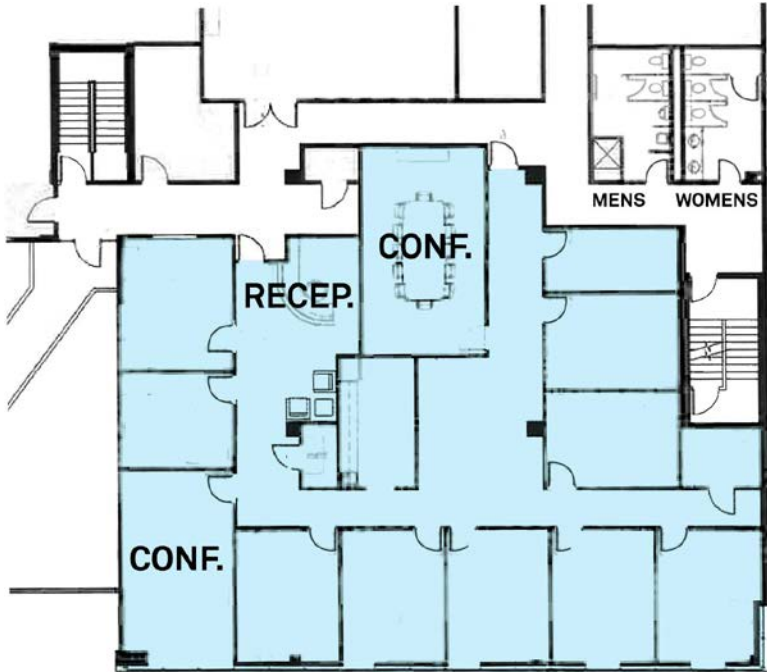
**Convenient To**

To restaurants, entertainment, and lodging

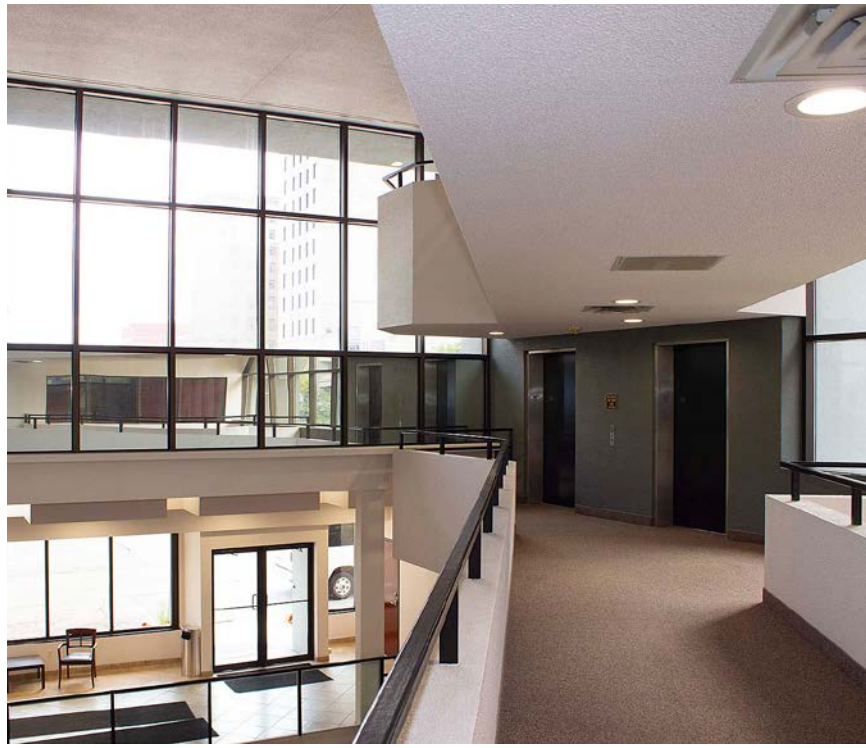
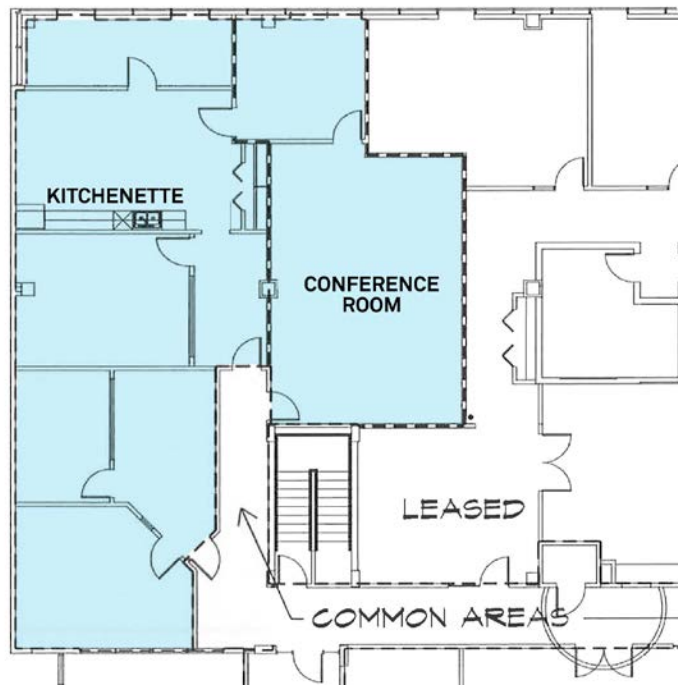




THIRD FLOOR PLAN:

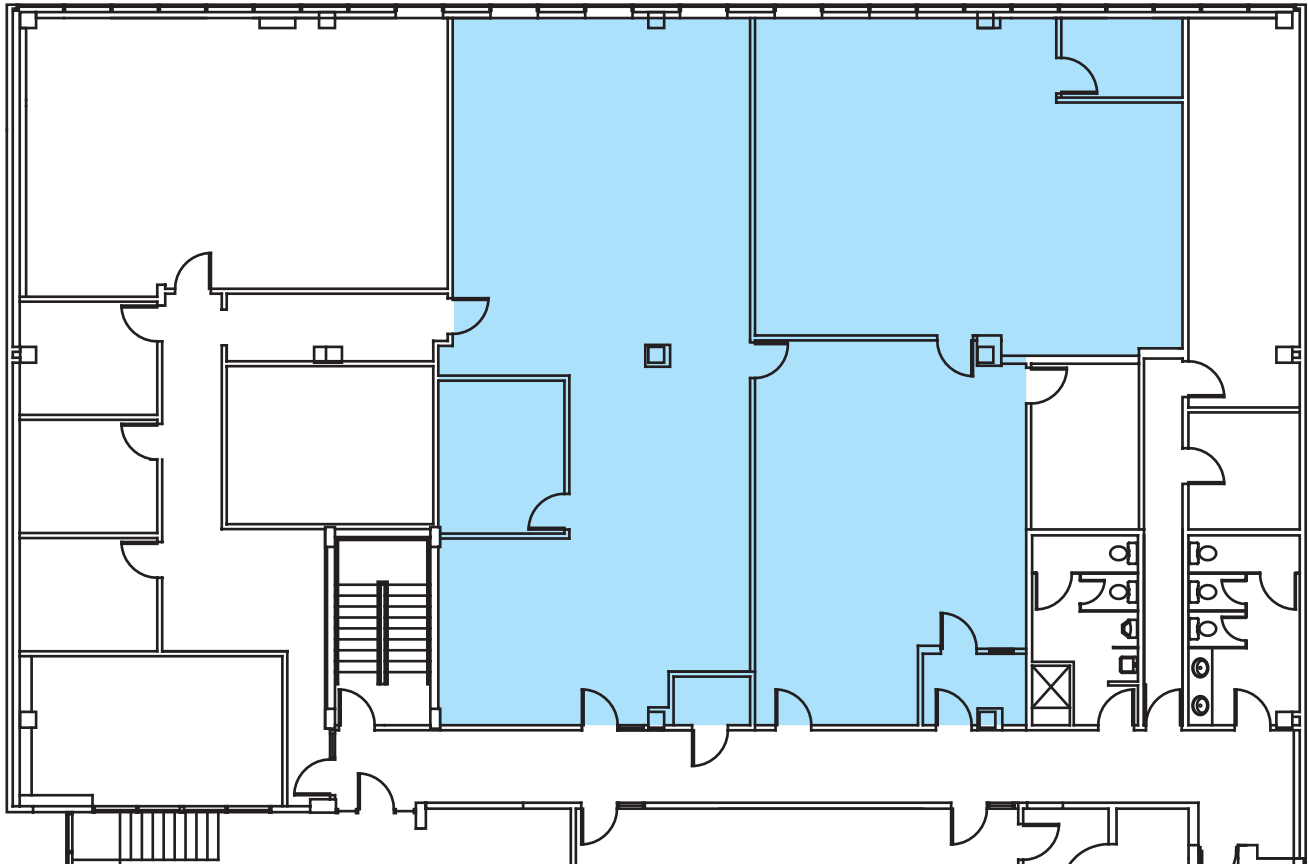


**SECOND FLOOR PLAN:**





LOWER LEVEL PLAN:



Lower level cafe dining room/lobby