

# PROFESSIONAL OFFICE SPACE WITH ON-SITE PARKING

## NEWLY REMODELED SPACE ADJACENT TO I-496



[Click to see  
suite 100 tour](#)



**FOR LEASE**

1000 W. St. Joseph Street,  
Lansing, MI

**SPACE  
AVAILABLE:**  
Up to 9,945 SF

**THOMAS JAMIESON, SIOR**

Senior Vice President, Office Advisor  
Direct: 517 319-9235  
thomas.jamieson@martincommercial.com

**ERIC F. ROSEKRANS, CCIM, CPM**

Executive Vice President  
Direct: 517 319-9209  
eric.rosekrans@martincommercial.com



**Martin**

1111 Michigan Ave., Ste 300  
East Lansing, MI 48823  
[martincommercial.com](http://martincommercial.com)



## Prime Modern Office Space Move-In Ready

This modern, 9,945 SF office building, remodeled in 2021, offers versatile spaces ready for immediate occupancy. With suites ranging from 2,400 to 5,000 SF and on-site parking, it's perfect for professional offices. The lower level features a large event space, team-building areas, and conference rooms, ideal for collaborative work environments. Located adjacent to I-496 and just minutes from downtown Lansing and major highways, this prime property provides convenience and accessibility for both employees and clients.

### LEASE RATE:

LOWER LEVEL

**\$12.00**

PSF/YR, Full Service

SUITE 100 & 200

**\$14.00**

PSF/YR, Plus Utilities & Janitorial

### PROPERTY INFORMATION



**SIZE:**  
9,945 SF



**LOWER LEVEL:**  
Big event Space



**BUILT:** 2001  
Remodeled 2021



**PARKING:** 40  
On-site spaces



**ZONING:**  
Office



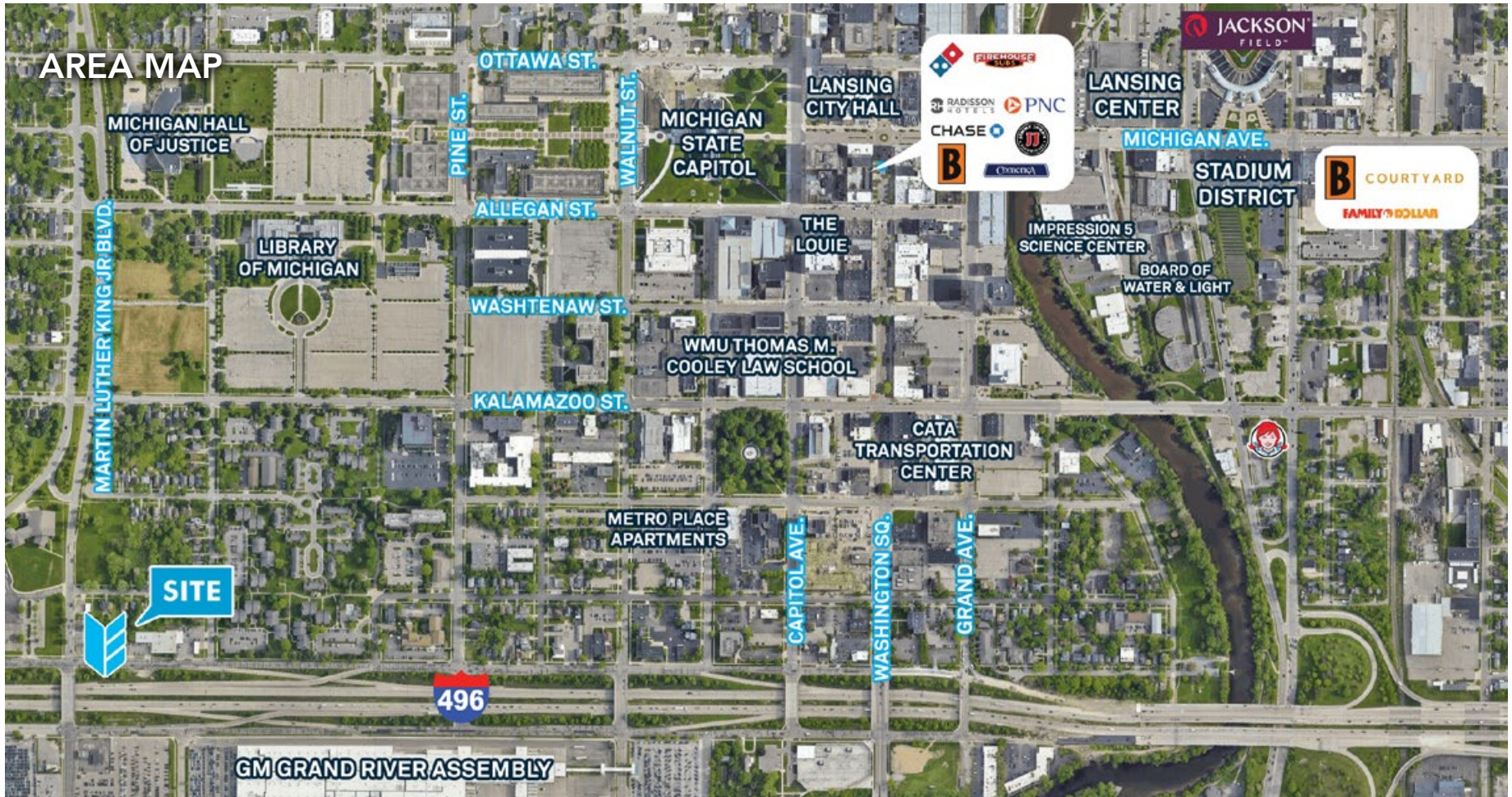
**INTERSTATE:**  
1 Mile to I-96



**CONDITION:**  
Move-in ready



**FINISHES:**  
Modern



## AREA INFORMATION

**1 Minute**

to I-496 Interchange

**3 Minutes**

to State Capitol

**1.8 Miles**

to Lansing Community College

**4.5 Miles**

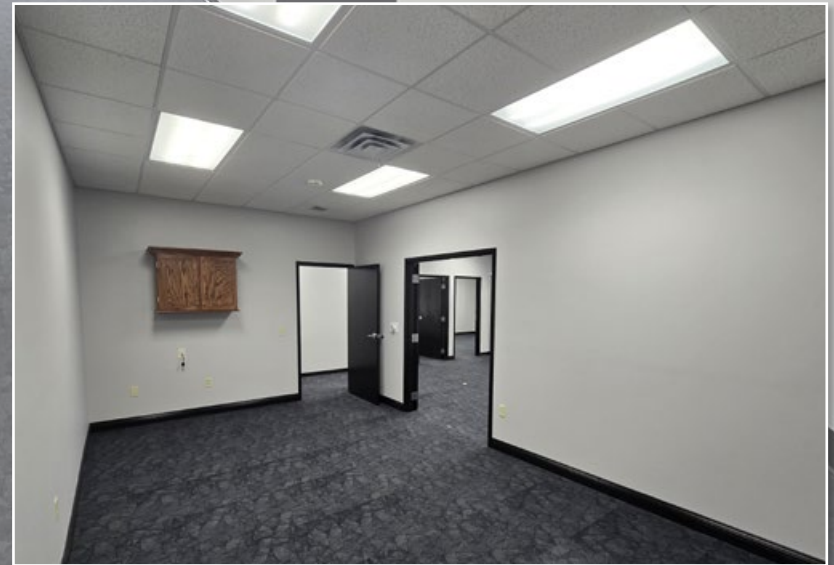
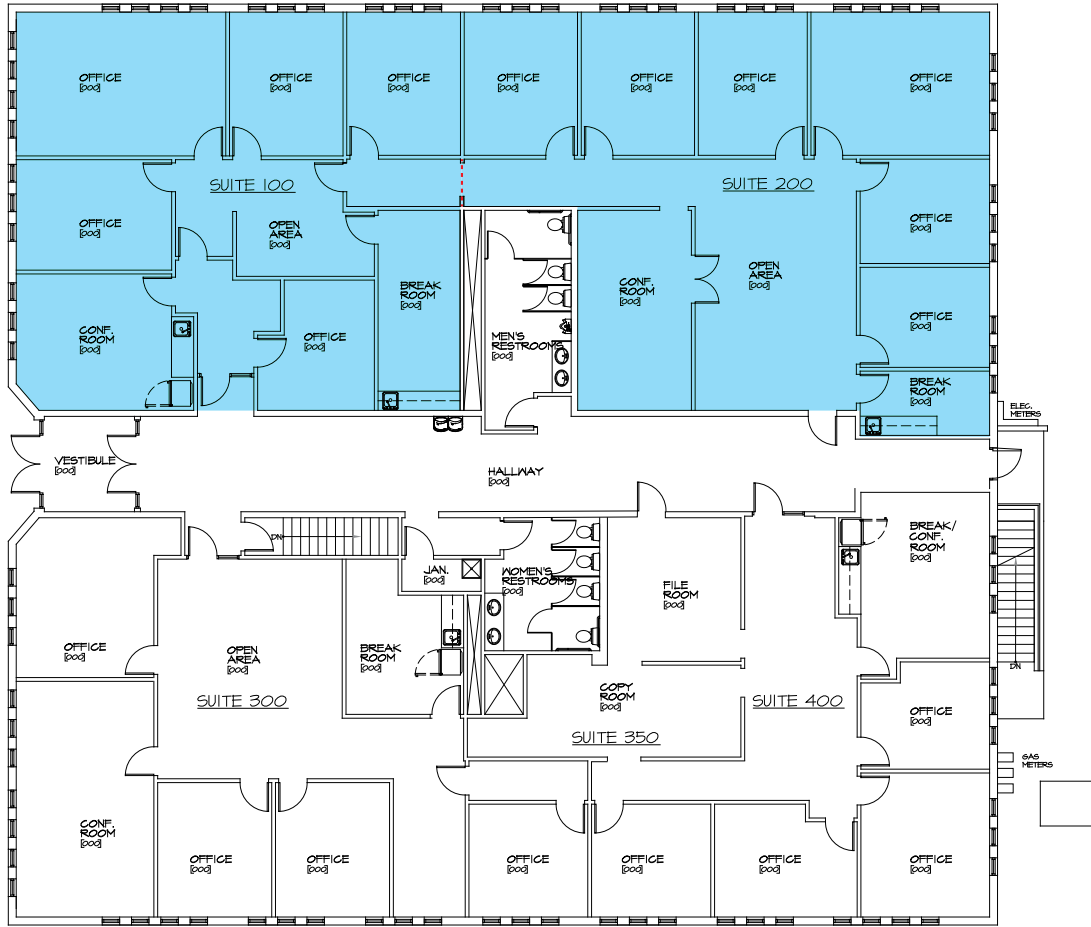
to Michigan State University

**Minutes**

to Capital Region International Airport, I-96, I-69, I-496 and downtown Lansing



# FLOOR PLAN: FIRST LEVEL



# FLOOR PLAN: LOWER LEVEL

