

DOWNTOWN OFFICE BUILDING W/PRIVATE PARKING

ONE BLOCK SOUTH OF SAGINAW STREET, NEAR LCC



FOR SALE

518 N. Seymour Ave.
Lansing, MI

BUILDING:
11,760 SF

ERIC F. ROSEKRANS, CCIM, CPM
Executive Vice President
Direct: 517 319-9209
eric.rosekrans@martincommercial.com

THOMAS JAMIESON, SIOR
Senior Vice President, Office Advisor
Direct: 517 319-9235
thomas.jamieson@martincommercial.com


Martin

1111 Michigan Ave., Ste 300
East Lansing, MI 48823
martincommercial.com



Free Standing Brick Building with Private Parking Lot

Prominently positioned just west of Lansing Community College and only an 8-minute walk to the State Capitol, 518 Seymour offers a unique opportunity to own a well-appointed, free-standing office building in the heart of downtown Lansing. This two-story brick building includes a fully finished lower level and is serviced by an elevator. The first floor features a welcoming reception area, conference room, multiple private offices, a kitchenette, and direct access to a private patio. The second floor offers additional private offices and another conference room, creating an efficient layout ideal for professional services or administrative use.

The lower level includes two offices and two large workrooms, perfect for storage, meetings, or expanded team workspace. Additional highlights include a security system, building signage opportunities, and a private on-site parking lot with 42 spaces—a rare amenity in a downtown setting.

This well-maintained property combines functionality, visibility, and walkable access to downtown amenities, making it a standout choice for businesses seeking a strong central Lansing presence.

SALE PRICE:

\$495,000

CASH OR NEW MORTGAGE

(Expenses available upon request)

PROPERTY INFORMATION



11,760 SF
2-Story Building
+ Lower Level



PARCEL:
0.723 Acres



BUILT:
1975



PRIVATE PARKING
Gated Lot
42 Spaces



ZONING
D-1 Professional

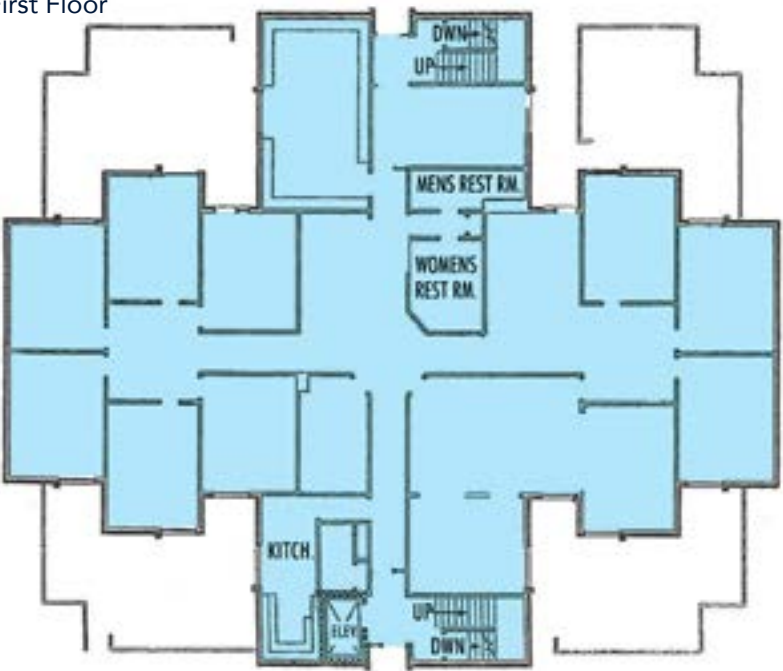


8 MINUTE WALK
To State Capitol

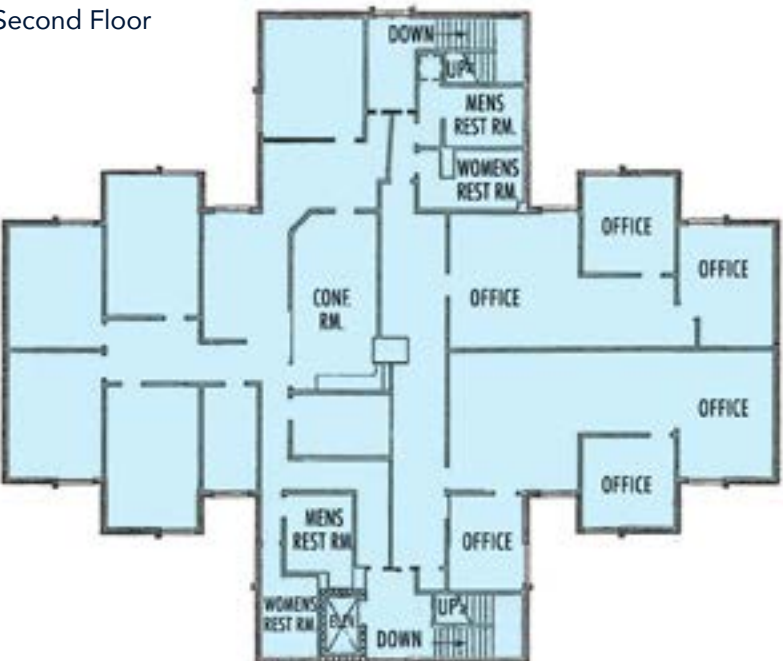
© 2025 MARTIN COMMERCIAL PROPERTIES, INC. ALL RIGHTS RESERVED. THIS INFORMATION HAS BEEN OBTAINED FROM SOURCES BELIEVED RELIABLE BUT HAS NOT BEEN VERIFIED FOR ACCURACY OR COMPLETENESS. YOU SHOULD CONDUCT A CAREFUL, INDEPENDENT INVESTIGATION OF THE PROPERTY AND VERIFY ALL INFORMATION. ANY RELIANCE ON THIS INFORMATION IS SOLELY AT YOUR OWN RISK. MARTIN COMMERCIAL PROPERTIES AND THE MARTIN LOGO ARE SERVICE MARKS OF MARTIN COMMERCIAL PROPERTIES, INC. ALL OTHER MARKS DISPLAYED ON THIS DOCUMENT ARE THE PROPERTY OF THEIR RESPECTIVE OWNERS. PHOTOS HEREIN ARE THE PROPERTY OF THEIR RESPECTIVE OWNERS. USE OF THESE IMAGES WITHOUT THE EXPRESS WRITTEN CONSENT OF THE OWNER IS PROHIBITED.

FLOOR PLANS

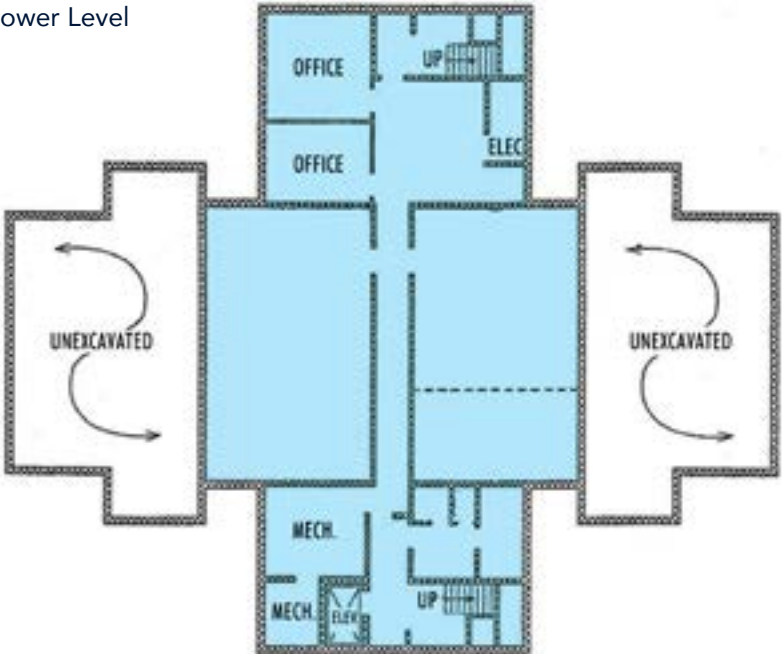
First Floor



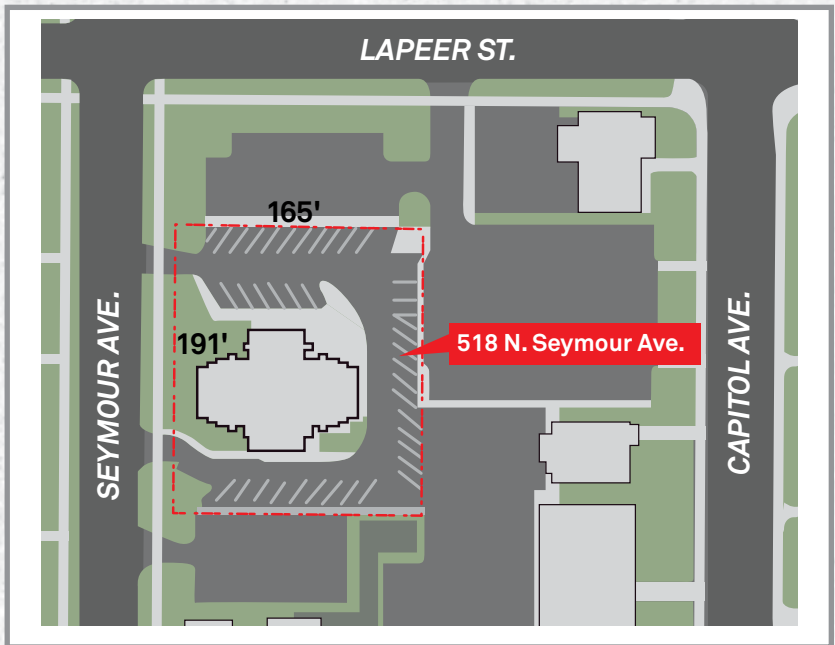
Second Floor



Lower Level



SITE PLAN



GALLERY



First Floor



Second Floor



Lower Level





CITY HALL

MI STATE
CAPITOL

LANSING
COMMUNITY
COLLEGE

CAPITOL VIEW
APT.

GENESEE ST.

SEYMOUR AVE.

518 N. SEYMOUR AVE.



AREA INFORMATION

<5 Minute

drive to State Capitol, Lansing
Center, Jackson Field, Lansing
Shuffle and River Front Park

<5 Minute

drive to I-496

±35 Restaurants

& coffee/specialty shops
Downtown

Conveniently Located

to MI state government buildings,
universities, parks, Washington
Square entertainment, shopping and
restaurants

CITY OF LANSING TAX DATA

Parcel Number	33-01-01-16-130-040
2025 SEV:	\$695,000
2025 Taxable Value:	\$386,532
2024 Taxes:	±\$31,222

DOWNTOWN LANSING MAP

