

9-STORY HIGH RISE OFFICE BUILDING IN THE HEART OF DOWNTOWN LANSING



FOR LEASE
101 S. Washington Sq.,
Lansing, MI

Available:
2ND Floor: 2,257 SF
6TH Floor: 3,150 SF

ERIC F. ROSEKRANS, CCIM, CPM
Executive Vice President
Direct: 517 319-9209
eric.rosekrans@martincommercial.com

THOMAS JAMIESON, SIOR
Senior Vice President, Office Advisor
Direct: 517 319-9235
thomas.jamieson@martincommercial.com


Martin

1111 Michigan Ave., Ste 300
East Lansing, MI 48823
martincommercial.com



66,000 SF Iconic Corner Downtown Office Space Near the State Capitol

101 S. Washington is a 9-story, high rise professional office building at the corner of Washington Square and Michigan Avenue. The building features large expanses of windows, keyless entry & security fobs for after-hours building & elevator access and state-of-the-art HVAC system. Just one block south of the State Capitol, this prime location places you in the center of Washington Square, surrounded by restaurants, shopping, banks, and vibrant city amenities.

The property enjoys excellent visibility, making it an ideal location for businesses seeking prominence and accessibility. Building signage opportunities further enhance exposure. 101 S. Washington is home to an impressive mix of tenants, including First National Bank of Michigan, Small Business Association of Michigan and the County Road Association of Michigan.

Discover the property's prime location on South Washington Square and scenic views of Downtown Lansing.

AVAILABLE:

6th Floor, Suite 600
3,150 SF

\$26.00

PSF/YR, FULL SERVICE

2nd Floor:
2,257 SF

Contact Agent For Pricing

PROPERTY INFORMATION

SIZE:
2,257 and 3,150 SF

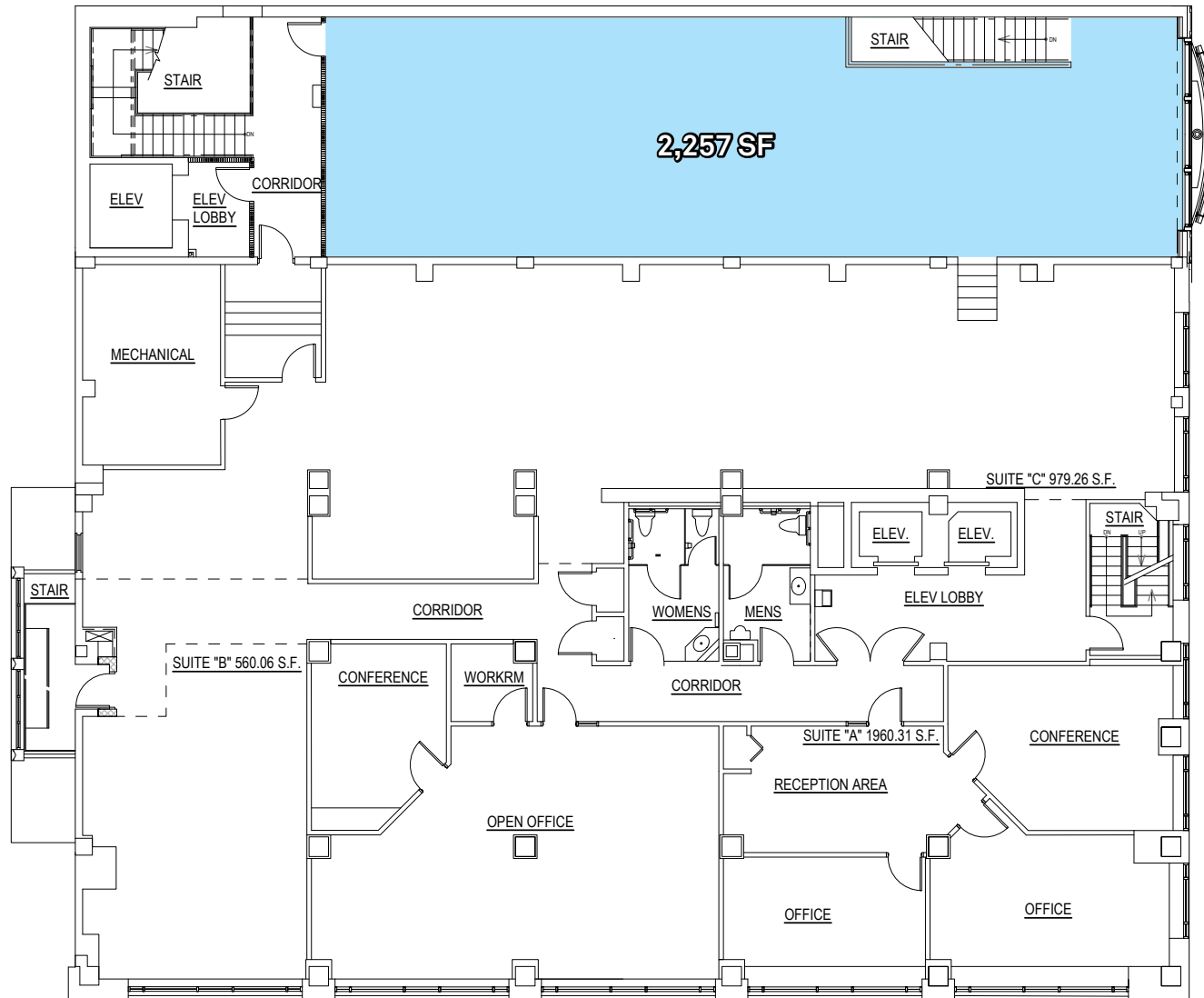
PARKING:
Municipal
& Street Parking

COMMON AREA:
Conference/
Banquet Rooms

EASY WALK:
To Restaurants &
Shops

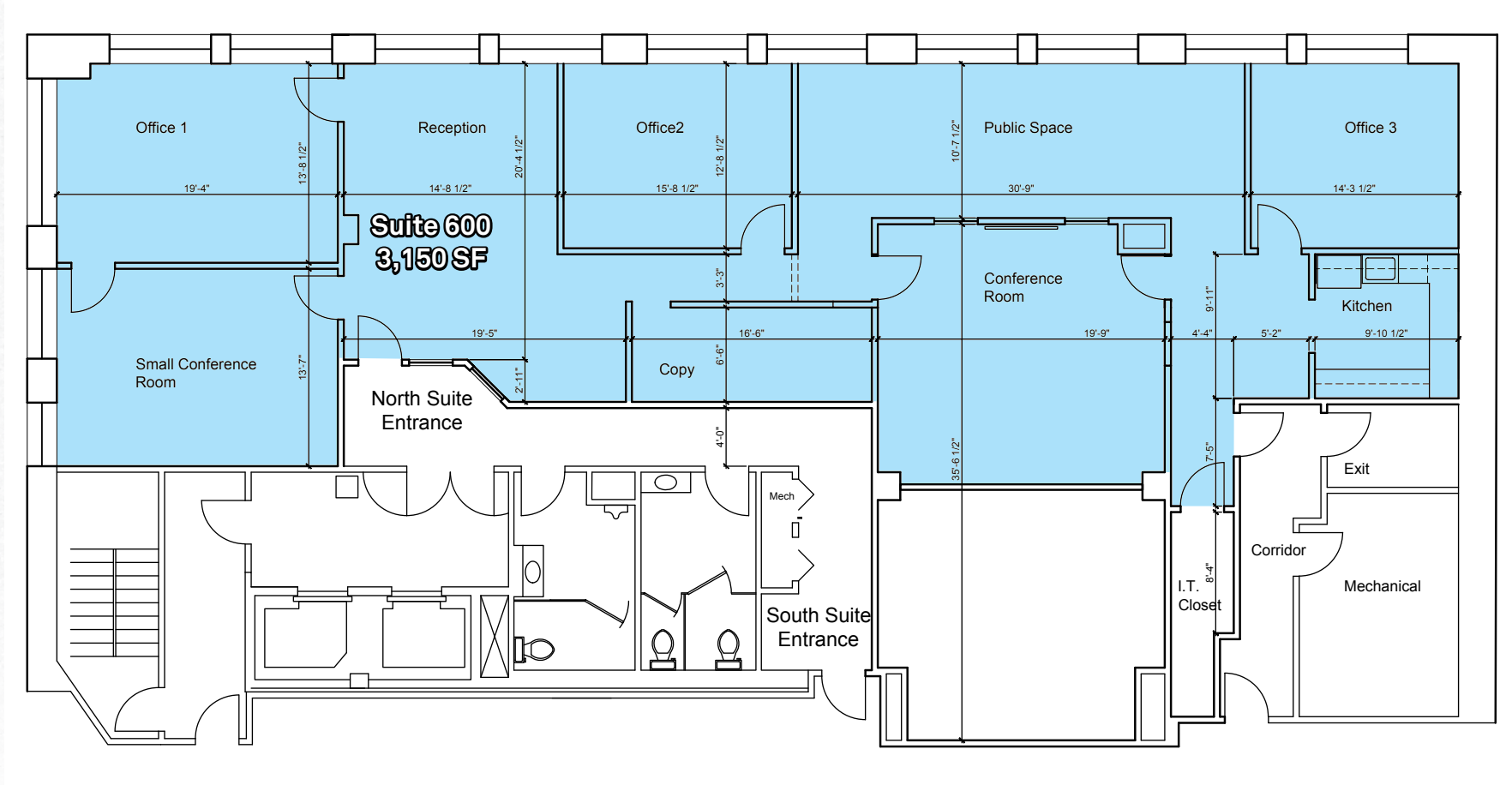
© 2026 MARTIN COMMERCIAL PROPERTIES, INC. ALL RIGHTS RESERVED. THIS INFORMATION HAS BEEN OBTAINED FROM SOURCES BELIEVED RELIABLE BUT HAS NOT BEEN VERIFIED FOR ACCURACY OR COMPLETENESS. YOU SHOULD CONDUCT A CAREFUL, INDEPENDENT INVESTIGATION OF THE PROPERTY AND VERIFY ALL INFORMATION. ANY RELIANCE ON THIS INFORMATION IS SOLELY AT YOUR OWN RISK. MARTIN COMMERCIAL PROPERTIES AND THE MARTIN LOGO ARE SERVICE MARKS OF MARTIN COMMERCIAL PROPERTIES, INC. ALL OTHER MARKS DISPLAYED ON THIS DOCUMENT ARE THE PROPERTY OF THEIR RESPECTIVE OWNERS. PHOTOS HEREIN ARE THE PROPERTY OF THEIR RESPECTIVE OWNERS. USE OF THESE IMAGES WITHOUT THE EXPRESS WRITTEN CONSENT OF THE OWNER IS PROHIBITED.

FLOOR PLAN
2ND FLOOR: 2,257 SF



FLOOR PLAN

6TH FLOOR SUITE 600: 3,150 SF



PROPERTY BROCHURE

101 South Washington Square, Lansing



AREA INFORMATION

4 Minute

walk to MI State Capitol

7 Minute

walk to Lansing Community College

0.7 Miles

to I-496

4 Miles

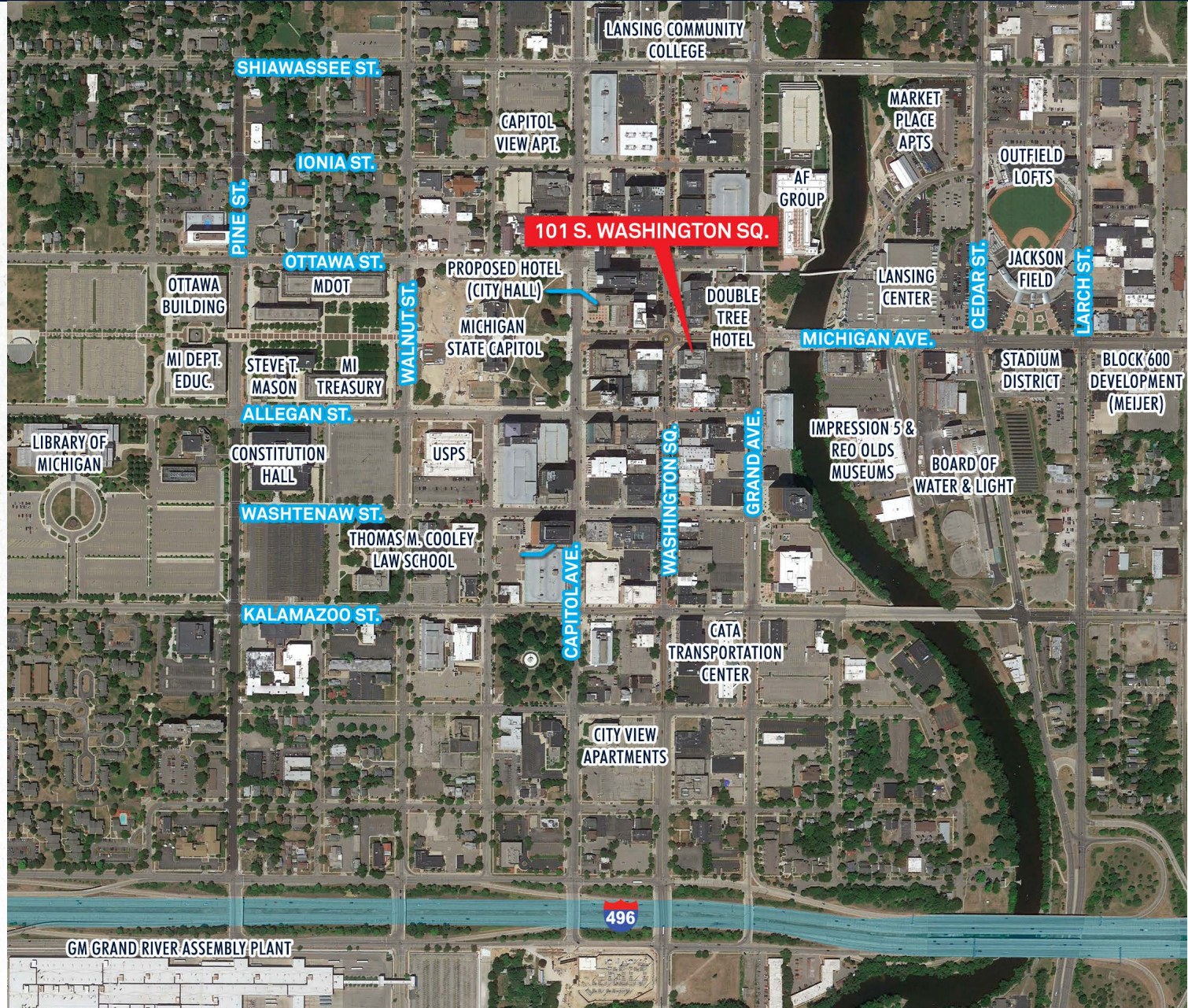
to Michigan State University

Near

Restaurants, shopping, lodging and entertainment

Conveniently Located Near

State Capitol, Washington Square, Lansing Center and Lansing Community College



GALLERY:

