

SPACE ON 2ND AND 3RD FLOOR IN 3-STORY OFFICE BUILDING ON THE CORNER OF WASHINGTON SQUARE AND IONIA STREET

230
NORTH

FOR SUBLEASE
230 N Washington Sq.
Lansing, MI

AVAILABLE:
3,601 - 19,973 SF

ERIC F. ROSEKRANS, CCIM, CPM
Executive Vice President
Direct: 517 319-9209
eric.rosekrans@martincommercial.com

THOMAS JAMIESON, SIOR
Senior Vice President, Office Advisor
Direct: 517 319-9235
thomas.jamieson@martincommercial.com


Martin
martincommercial.com



PROMINENT DOWNTOWN LANSING OFFICE OPPORTUNITY

This downtown Lansing office opportunity offers flexible sublease space in a well-located, three-story building at the prominent corner of Washington Square and Ionia Street. With 3,601 to 19,973 SF available across the second and third floors, the property provides an ideal solution for tenants seeking a full-floor presence or a combination of workspace configurations.

The space features modern finishes, abundant natural light from large perimeter windows, and access to a shared ground-floor boardroom, supporting both collaborative and professional work environments. Positioned in the heart of downtown, the building is directly adjacent to the North Grand parking ramp, offering convenient access for employees and visitors alike.

Tenants benefit from immediate proximity to the State Capitol, Lansing Community College, the Lansing Center, and a wide range of restaurants, hotels, and amenities—all within walking distance. With quick access to I-496 and US-127, and just minutes from Michigan State University and Capital Region International Airport, this location delivers both accessibility and visibility in one of Lansing's most connected business districts.

PROPERTY FEATURES



PROXIMITY:
Heart of
Downtown



ADJACENT:
To North Grand
Ramp



INTERIOR:
Modern Finishes



NATURAL LIGHT:
Large Windows
Throughout



GROUND FLOOR:
Shared Board Room (Shown Here)

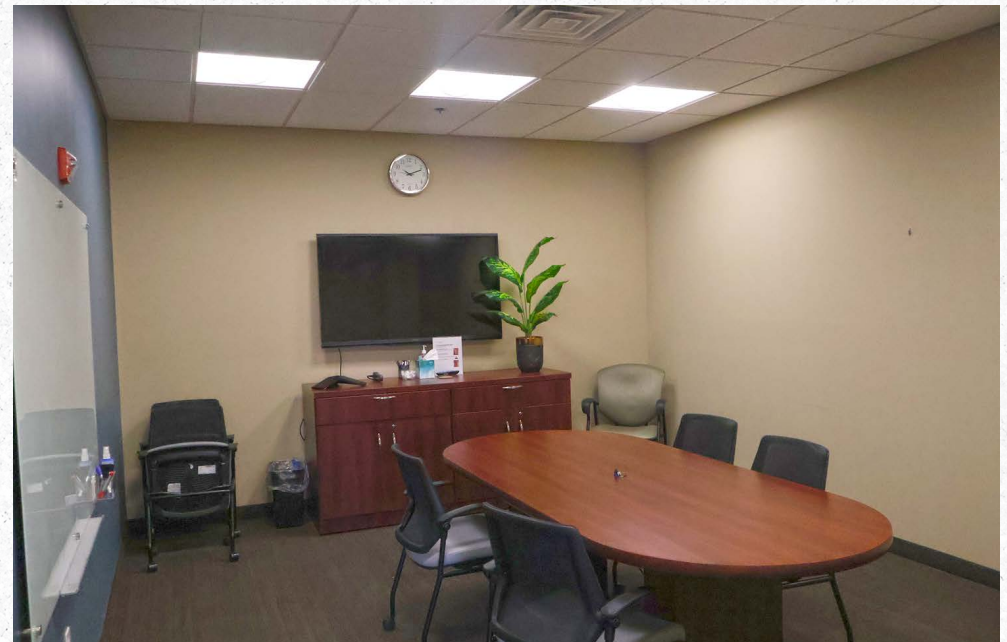
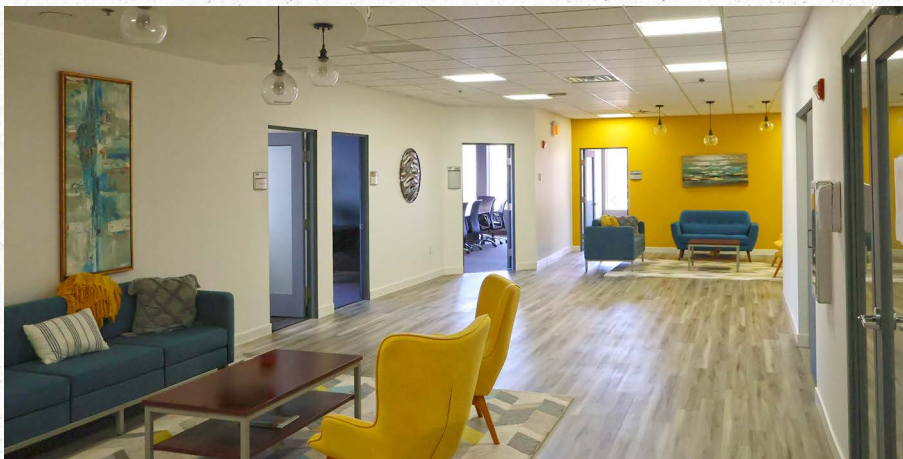
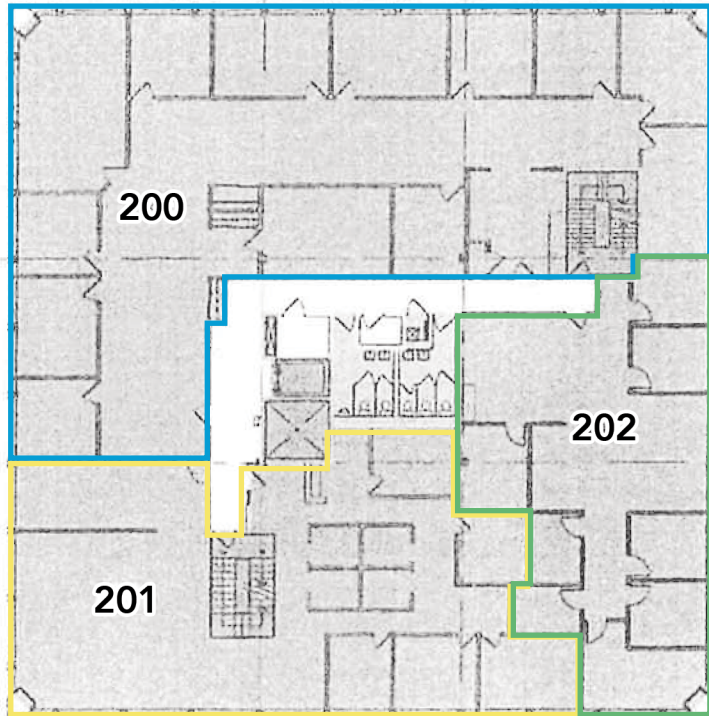
SUBLEASE RATE:

\$25.00

PSF/YR, + JANITORIAL (LEASE EXP. 9/30/2027)



2ND FLOOR: 3,601 - 9,850 SF





3RD FLOOR: 10,123 SF





AREA INFORMATION

6 Minutes

to I-496 & US-127

5 Miles

to Michigan State University

4.5 Miles

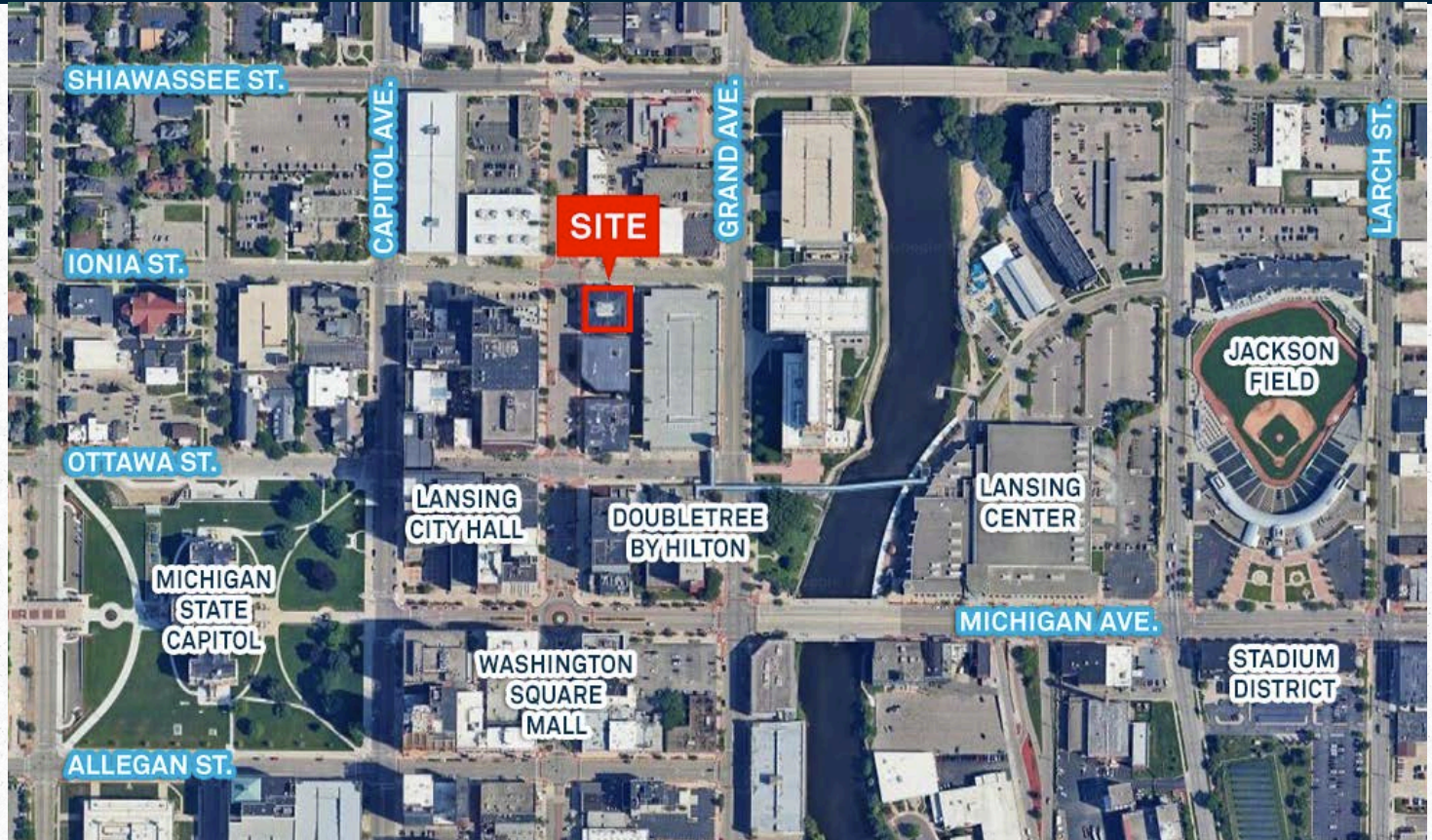
to Capital Region International Airport

Walking Distance

to State Capitol, City Hall, Lansing Center, Lansing Community College and DoubleTree by Hilton Lansing

Convenient

to restaurants, lodging and entertainment



DEMOGRAPHICS

	1-Mile	3-Miles	5-Miles
Population	14,034	90,194	200,271
Labor Population	11,615	74,717	168,180
Occupation Population	7,526	47,275	100,817

TRAFFIC COUNTS

Capitol Ave.	2,286 VPD
Grand Ave.	4,281 VPD



Martin Your Vision. Our Mission.

Martin Commercial Properties is a vertically integrated commercial real estate firm with an established track record of delivering superior service and unparalleled results to clients since 1962. Our experienced team efficiently serves clients nationally by combining big business benefits with the attentiveness to detail and insight that you would expect from a local firm. With offices in Lansing, Grand Rapids, and Tampa, we provide strategic advice and execution in five core lines of business including brokerage services, investment services, property management, property development, and corporate services.



Brokerage
Services



Property
Management



Construction
Services



Investment
Services



Corporate
Services

martincommercial.com | East Lansing | Grand Rapids | Tampa

© 2026 Martin Commercial Properties, Inc. All rights reserved. This information has been obtained from sources believed reliable but has not been verified for accuracy or completeness. You should conduct a careful, independent investigation of the property and verify all information. Any reliance on this information is solely at your own risk. Martin Commercial Properties and the Martin logo are service marks of Martin Commercial Properties, Inc. All other marks displayed on this document are the property of their respective owners. Photos herein are the property of their respective owners. Use of these images without the express written consent of the owner is prohibited.