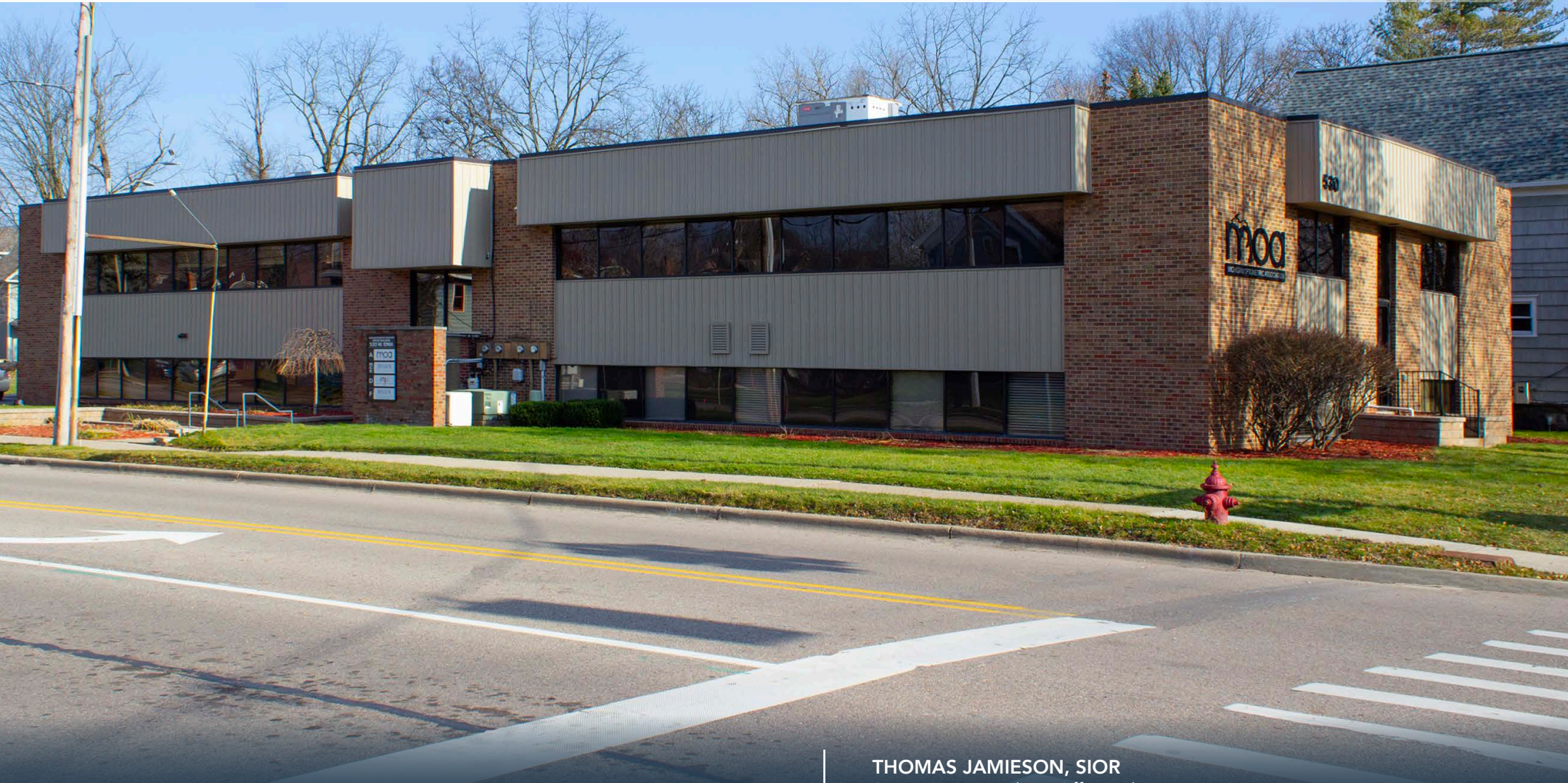


PROFESSIONAL OFFICE SPACE

ONE BLOCK NORTH OF CAPITOL COMPLEX



FOR LEASE
530 W Ionia Street
Lansing, MI

AVAILABLE:
SUITE B: 1,400 SF
SUITE C: 1,500 SF

THOMAS JAMIESON, SIOR
Senior Vice President, Office Advisor
Direct: 517 319-9235
thomas.jamieson@martincommercial.com

ERIC F. ROSEKRANS, CCIM, CPM
Executive Vice President
Direct: 517 319-9209
eric.rosekrans@martincommercial.com


Martin
martincommercial.com



MOVE-IN READY, FLEXIBLE SPACE IN DOWNTOWN LANSING - STEPS FROM THE CAPITOL

Just one block north of the Capitol Complex, this professional office space offers a rare combination of convenience, functionality, and flexibility in the heart of Downtown Lansing. 1,400-2,900 SF of well-designed space, both suites offer a reception area, private restrooms, a conference/meeting room, and two separate entrances—ideal for professional services or organizations seeking a central presence.

Located in a 12,826 SF, two-story owner-occupied building, the property is well maintained and includes amenities such as a handicap lift for second-floor access, a supplemental meeting room for larger gatherings, and a private parking lot with ±30 spaces. The suite is move-in ready but can be remodeled to fit a user's specific needs.

With a location less than a 10-minute walk to the State Capitol and surrounded by government offices, restaurants, and downtown amenities, this space offers both accessibility and professional prestige.

PROPERTY FEATURES



BUILT:
1970,
Renovated 1988



PARKING:
Private Lot for
±30 Vehicles



BUILDING:
12,826 SF 2-Story
Owner-Occupied



ACCESSIBILITY:
Second Floor
Accessible Handicap Lift



CONDITION:
Move-in Ready



LOCATION:
Central Downtown
Lansing

LEASE RATE:

\$16.00

PSF/YR, + JANITORIAL

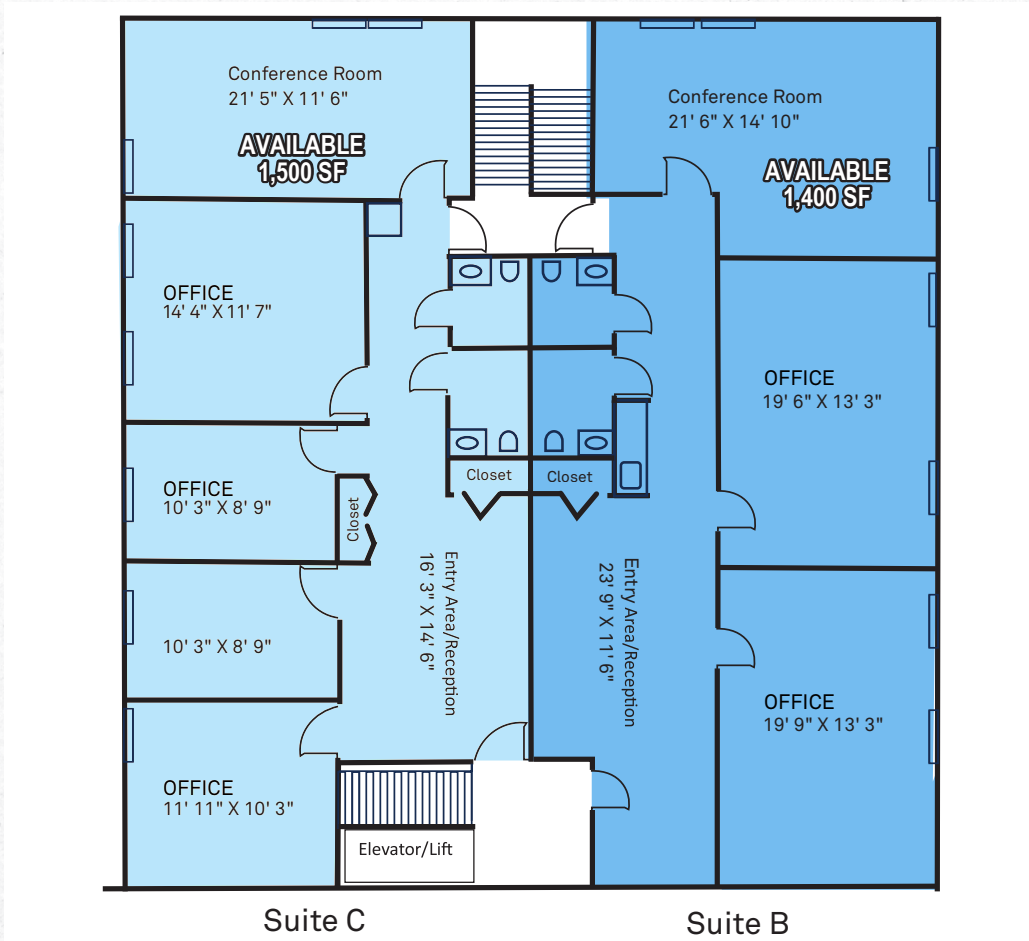


AERIAL VIEW





FLOOR PLAN



SUITE B



SUITE C



SUPPLEMENTAL MEETING ROOM





AREA INFORMATION

3 Minutes
to Lansing Community College

0.5 Mile
to MI State Capitol

1 Mile
to I-496

5 Miles
to Michigan State University

Convenient To
State Government buildings, Universities
and downtown amenities



DEMOGRAPHICS

Proximity	1-Mile	3-Miles	5-Miles
Population	197,040	85,811	197,040
Households	81,934	39,235	81,934
Labor Population	12,145	70,457	165,391
Occupation Population	8,002	45,271	99,219

TRAFFIC COUNTS - VPD

North Pine Street	3,784
E Ionia Street	669
W Ottawa Street	1,854

Martin Your Vision. Our Mission.

Martin Commercial Properties is a vertically integrated commercial real estate firm with an established track record of delivering superior service and unparalleled results to clients since 1962. Our experienced team efficiently serves clients nationally by combining big business benefits with the attentiveness to detail and insight that you would expect from a local firm. With offices in Lansing, Grand Rapids, and Tampa, we provide strategic advice and execution in five core lines of business including brokerage services, investment services, property management, property development, and corporate services.



Brokerage
Services



Property
Management



Construction
Services



Investment
Services



Corporate
Services

martincommercial.com | East Lansing | Grand Rapids | Tampa

© 2026 Martin Commercial Properties, Inc. All rights reserved. This information has been obtained from sources believed reliable but has not been verified for accuracy or completeness. You should conduct a careful, independent investigation of the property and verify all information. Any reliance on this information is solely at your own risk. Martin Commercial Properties and the Martin logo are service marks of Martin Commercial Properties, Inc. All other marks displayed on this document are the property of their respective owners. Photos herein are the property of their respective owners. Use of these images without the express written consent of the owner is prohibited.