

THE HISTORIC HOLLISTER BUILDING, OFFICE/RETAIL SPACE AVAILABLE DOWNTOWN, IN THE CENTER OF WASHINGTON SQUARE



FOR LEASE
106 W. Allegan Street
Lansing, MI

AVAILABLE:
UP TO 23,536 SF

ERIC F. ROSEKRANS, CCIM, CPM
Executive Vice President
Direct: 517 319-9209
eric.rosekrans@martincommercial.com

THOMAS JAMIESON, SIOR
Senior Vice President, Office Advisor
Direct: 517 319-9235
thomas.jamieson@martincommercial.com


Martin
martincommercial.com



THE HOLLISTER BUILDING – HISTORIC DOWNTOWN OFFICE SPACE STEPS FROM THE STATE CAPITOL

Located at 106 W. Allegan in the heart of Lansing, the Hollister Building is a historic six-story brick landmark offering unparalleled convenience and charm. Just one block south of the Michigan State Capitol, this prime location places you in the center of Washington Square, surrounded by restaurants, shopping, banks, and vibrant city amenities.

The property enjoys excellent visibility, making it an ideal location for businesses seeking prominence and accessibility. Building signage opportunities further enhance exposure.

The Hollister Building is home to an impressive mix of tenants, including Deloitte, Michigan Council for Maternal & Child Health, Michigan Premier Events, and Jimmy John's. Flexible leasing options are available with a minimum five-year lease term and renewal opportunities.

Discover the perfect blend of historic character, prime location, and a thriving tenant community at the iconic Hollister Building.

PROPERTY FEATURES



BUILT:
1900



PARKING:
Municipal & Street



BUILDING:
Up to 23,536 SF



EASY WALK:
to Restaurants & Shops

LEASE RATE:

\$20.00

PSF/YR, + UTILITIES & JANITORIAL

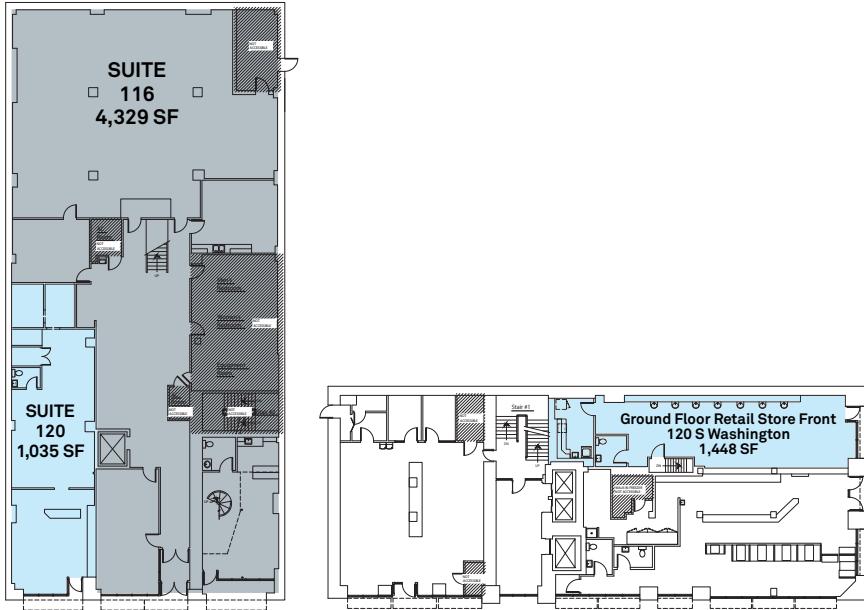
AVAILABLE SPACE:

- Suite 120 (1st Flr. 1,035 SF - Retail)
- 120 S Washington (1st Flr. 1,448 SF - Retail)
- Suite 116 (1st Flr. 4,329 SF)
& Suite 210 (2nd Flr. 6,910 SF): 11,239 SF
- Suite 200: 4,810 SF
- Suite 220: 800 SF
- Suite 500: 13,468 SF (10/1/2026)
- Suite 600: 4,000-10,068 SF
- Suites 500 & 600: 23,536 SF

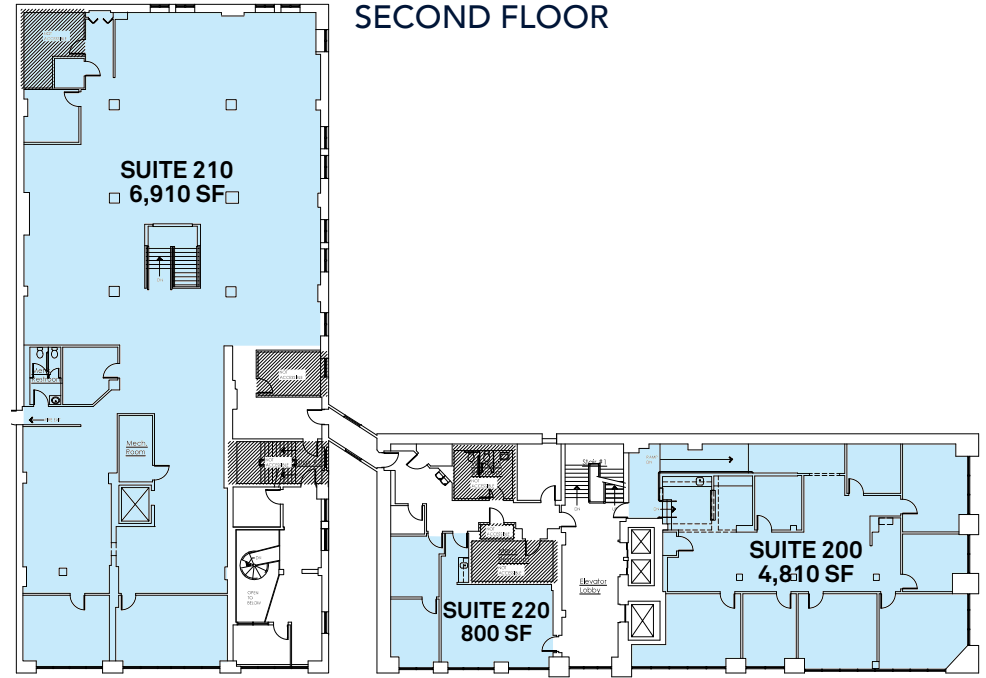


FLOOR PLANS

FIRST FLOOR



SECOND FLOOR

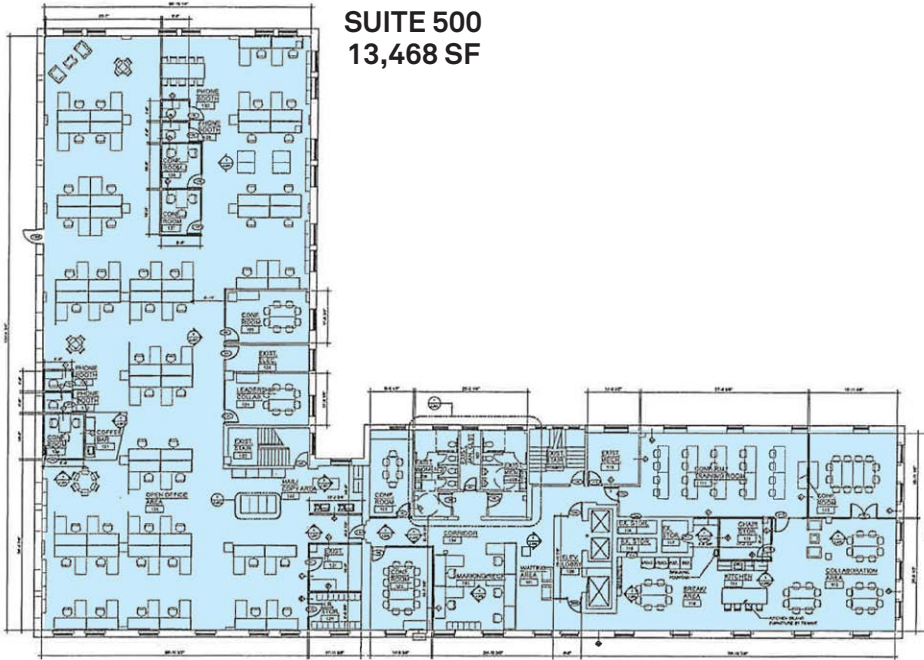




FLOOR PLANS

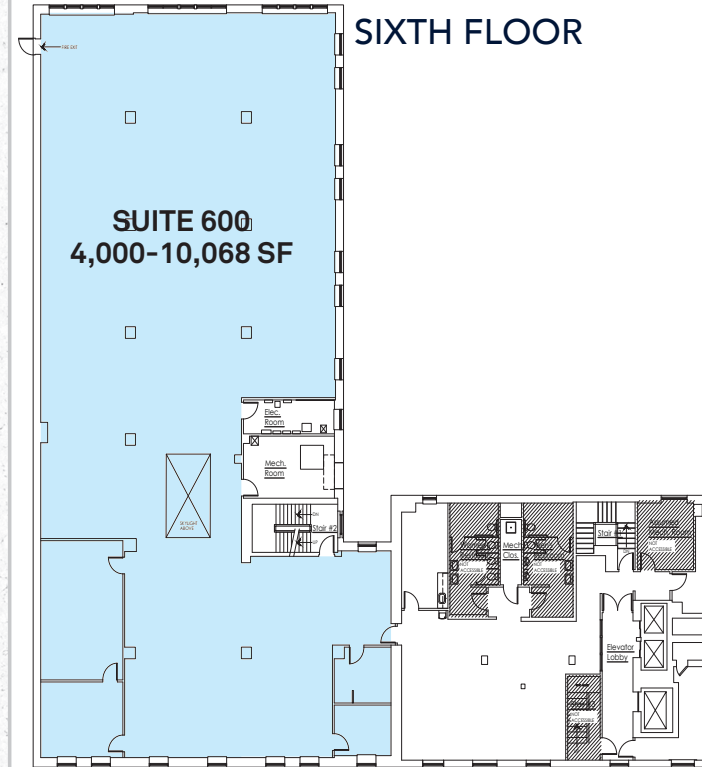
FIFTH FLOOR

SUITE 500
13,468 SF



SIXTH FLOOR

SUITE 600
4,000-10,068 SF





AREA INFORMATION

4 Minute

walk to Michigan State Capitol

8 Minute

walk to Lansing Community College

1.2 Miles

to I-496

4 Miles

to Michigan State University

Convenient To

State Government buildings, Boji Tower, Washington Square, and downtown lodging and entertainment



Martin Your Vision. Our Mission.

Martin Commercial Properties is a vertically integrated commercial real estate firm with an established track record of delivering superior service and unparalleled results to clients since 1962. Our experienced team efficiently serves clients nationally by combining big business benefits with the attentiveness to detail and insight that you would expect from a local firm. With offices in Lansing, Grand Rapids, and Tampa, we provide strategic advice and execution in five core lines of business including brokerage services, investment services, property management, property development, and corporate services.



Brokerage
Services



Property
Management



Construction
Services



Investment
Services



Corporate
Services

martincommercial.com | East Lansing | Grand Rapids | Tampa

© 2026 Martin Commercial Properties, Inc. All rights reserved. This information has been obtained from sources believed reliable but has not been verified for accuracy or completeness. You should conduct a careful, independent investigation of the property and verify all information. Any reliance on this information is solely at your own risk. Martin Commercial Properties and the Martin logo are service marks of Martin Commercial Properties, Inc. All other marks displayed on this document are the property of their respective owners. Photos herein are the property of their respective owners. Use of these images without the express written consent of the owner is prohibited.