

DOWNTOWN OFFICE SUITE LESS THAN A BLOCK FROM I-496 CONVENIENTLY LOCATED ON WASHINGTON AVE



FOR LEASE
608 S Washington Ave
Lansing, MI

AVAILABLE:
FIRST FLOOR: 5,227 SF

ERIC F. ROSEKRANS, CCIM, CPM
Executive Vice President
Direct: 517 319-9209
eric.rosekrans@martincommercial.com

THOMAS JAMIESON, SIOR
Senior Vice President, Office Advisor
Direct: 517 319-9235
thomas.jamieson@martincommercial.com


Martin
martincommercial.com



FIRST FLOOR SUITE WITH LARGE OPEN PLAN SPACE

608 S. Washington is 5,227 SF first floor suite that includes large reception area, private offices, kitchenette and large open room suited for various uses or office systems.

Private attached lot and street parking available. Located adjacent to Lake Trust Credit Union, City View Apartments, Michigan Lottery and Michigan Retailers Association Headquarters. The Ovation Center for Music and Arts is one block away.

Convenient 10-minute walk to the Michigan State Capitol and Washington Square Mall services, shopping and restaurants with immediate access to I-496.

LEASE RATE:

\$18.00

SF/YR, + UTILITIES AND JANITORIAL

PROPERTY FEATURES

 **SIZE:**
5,227 SF
First Floor



PARKING:
Paved, On-site

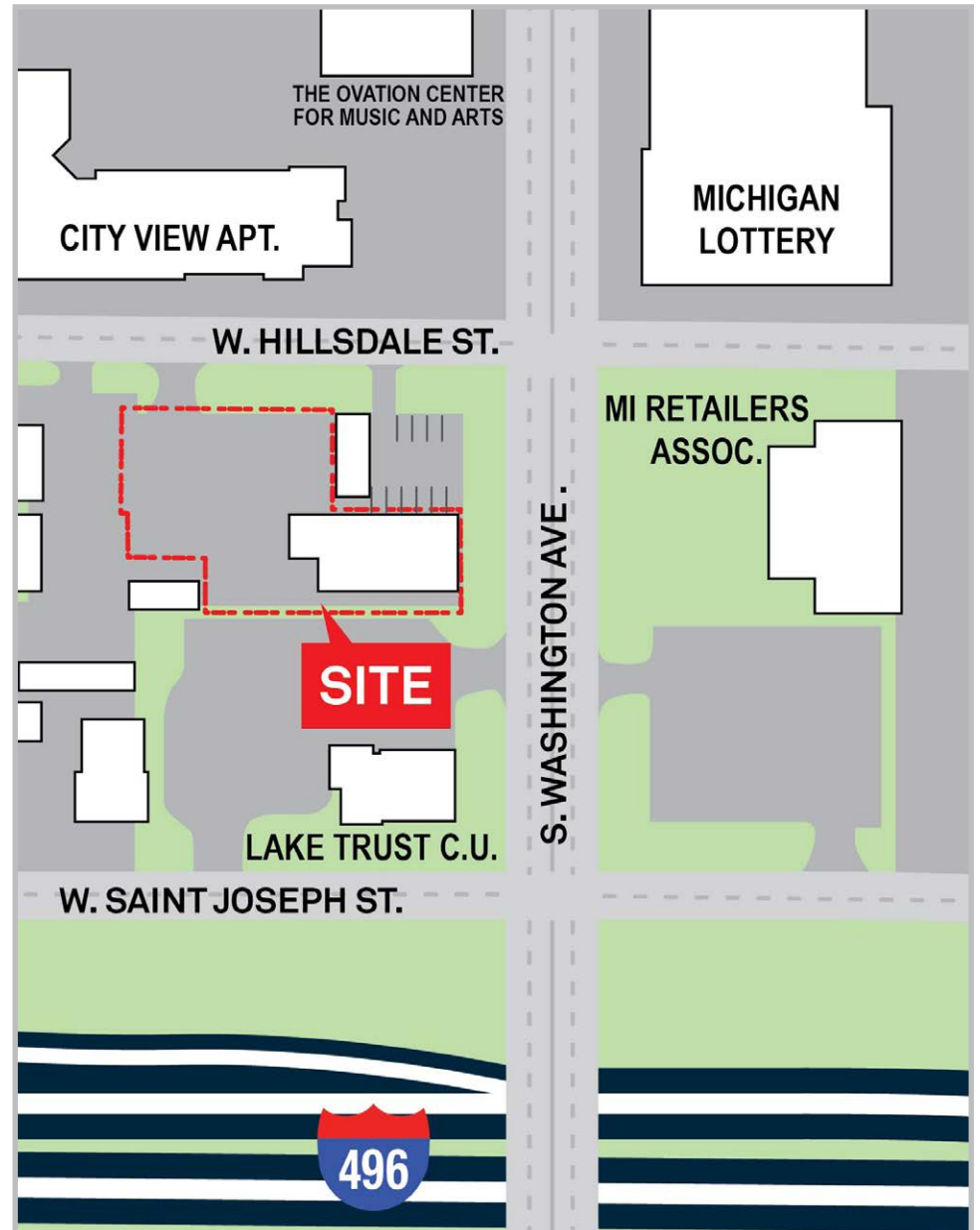
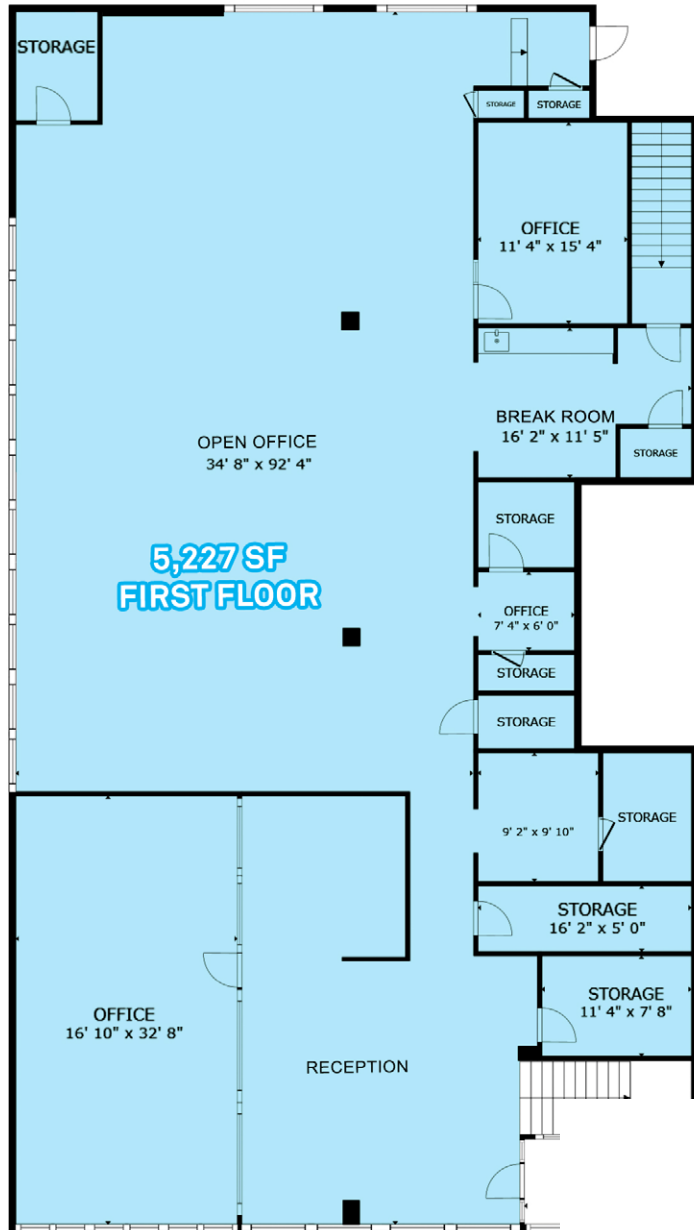
 **BUILT:**
1955,
Renovated 2021



SUITE:
Large, Open Floor
Plan, Full Kitchen



FLOOR PLAN & SITE PLAN





GALLERY





AREA INFORMATION

<1 Mile

to Michigan State Capitol and downtown Lansing

5 Miles

to Capital Region International Airport

<4 Miles

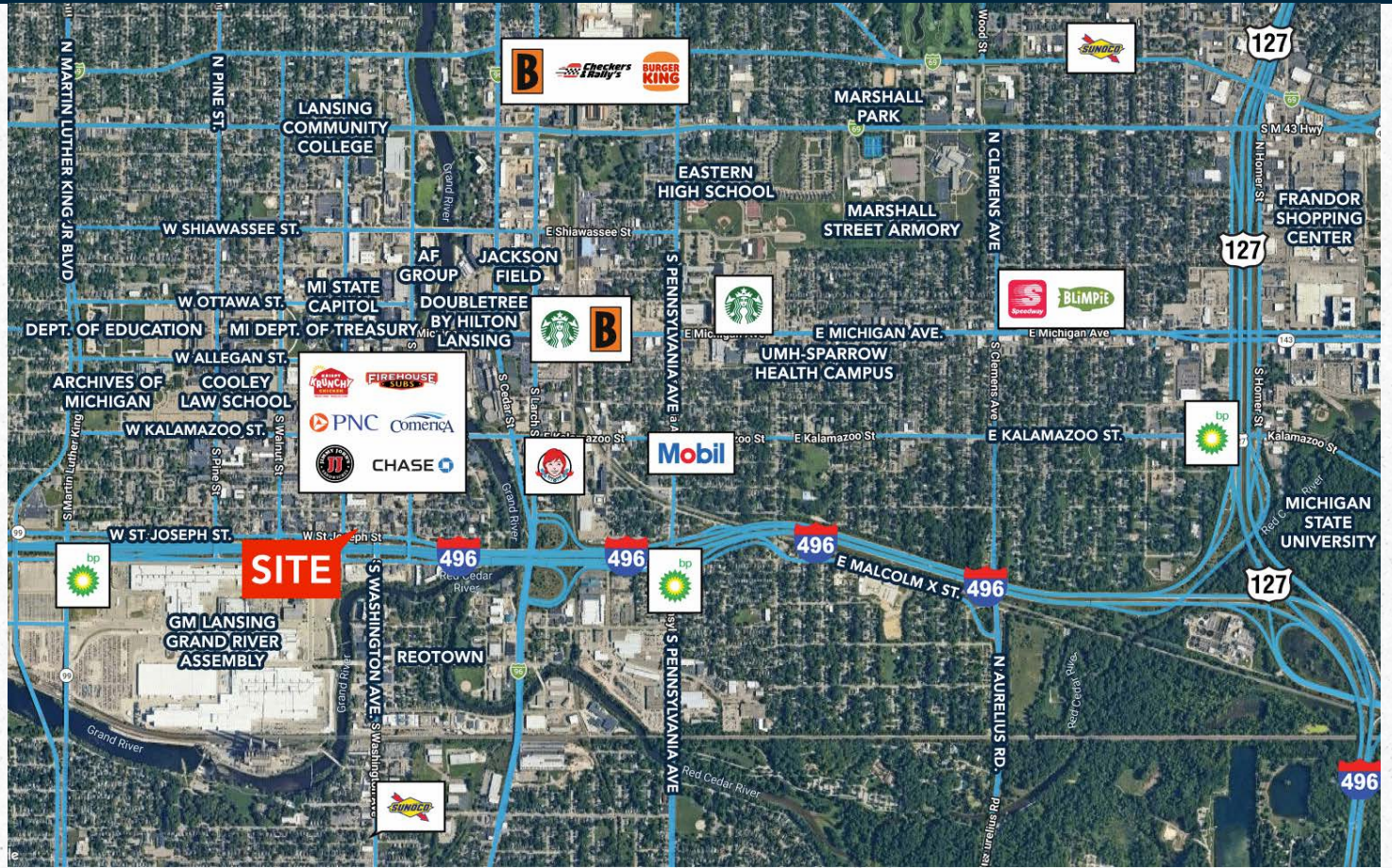
to Lansing Community College and Michigan State University

5 Minutes

to University of Michigan Health-Sparrow Hospital and surrounding health campus

Convenient

to I-496 and US-127, lodging, restaurants, downtown entertainment, and more



DEMOGRAPHICS

Proximity	1-Mile	3-Miles	5-Miles
Population	12,243	95,810	204,802
Households	6,136	42,356	85,247
Average HH Income	\$58,315	\$71,707	\$76,116

TRAFFIC COUNTS - VPD

S Washington Ave	5,168
I-496	52,219

Martin Your Vision. Our Mission.

Martin Commercial Properties is a vertically integrated commercial real estate firm with an established track record of delivering superior service and unparalleled results to clients since 1962. Our experienced team efficiently serves clients nationally by combining big business benefits with the attentiveness to detail and insight that you would expect from a local firm. With offices in Lansing, Grand Rapids, and Tampa, we provide strategic advice and execution in five core lines of business including brokerage services, investment services, property management, property development, and corporate services.



Brokerage
Services



Property
Management



Construction
Services



Investment
Services



Corporate
Services

martincommercial.com | East Lansing | Grand Rapids | Tampa